



# Structures as the key of a system. Example Elche, Spain

Maurits Willem Ertsen

Delft University of Technology

14-12-2011

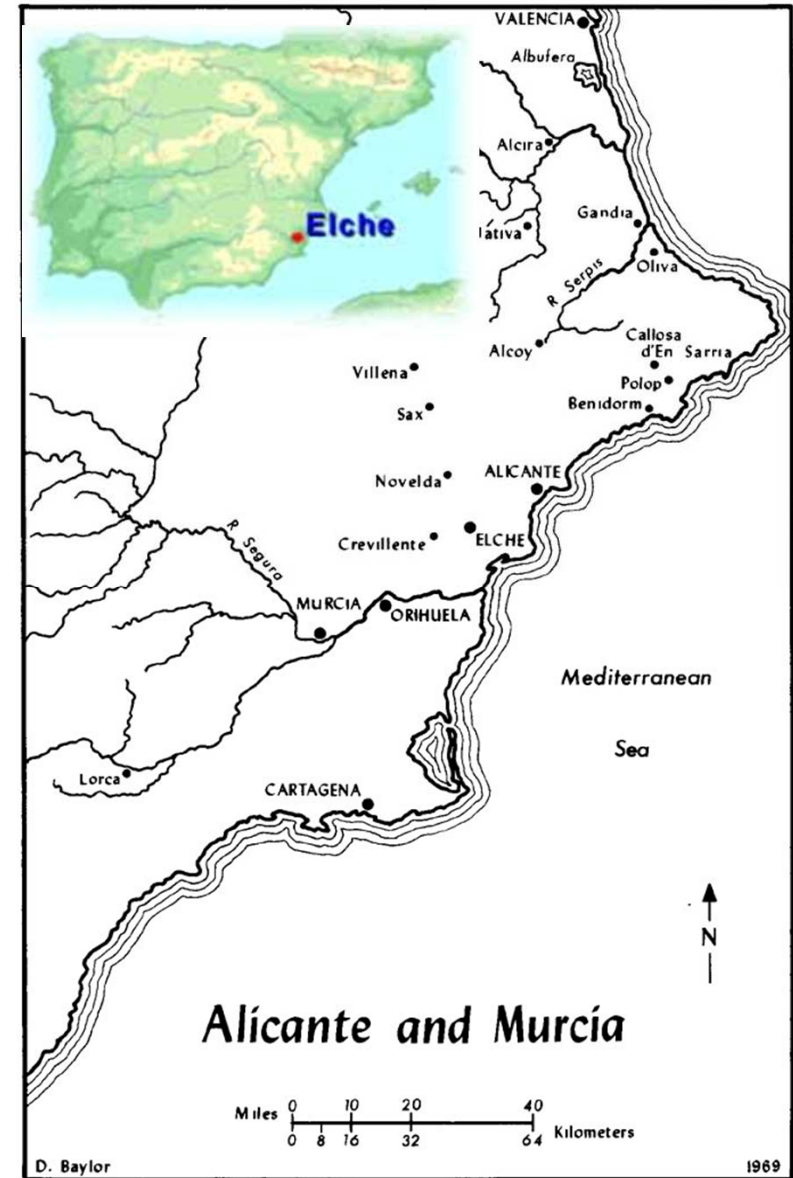
Third largest city of the  
Autonomous Community of  
Valencia, Spain

Some 200,000 inhabitants

Irrigated agriculture

Huertas

Elche Palmeral: a little over 500  
hectares (about 5,000,000 m<sup>2</sup>)

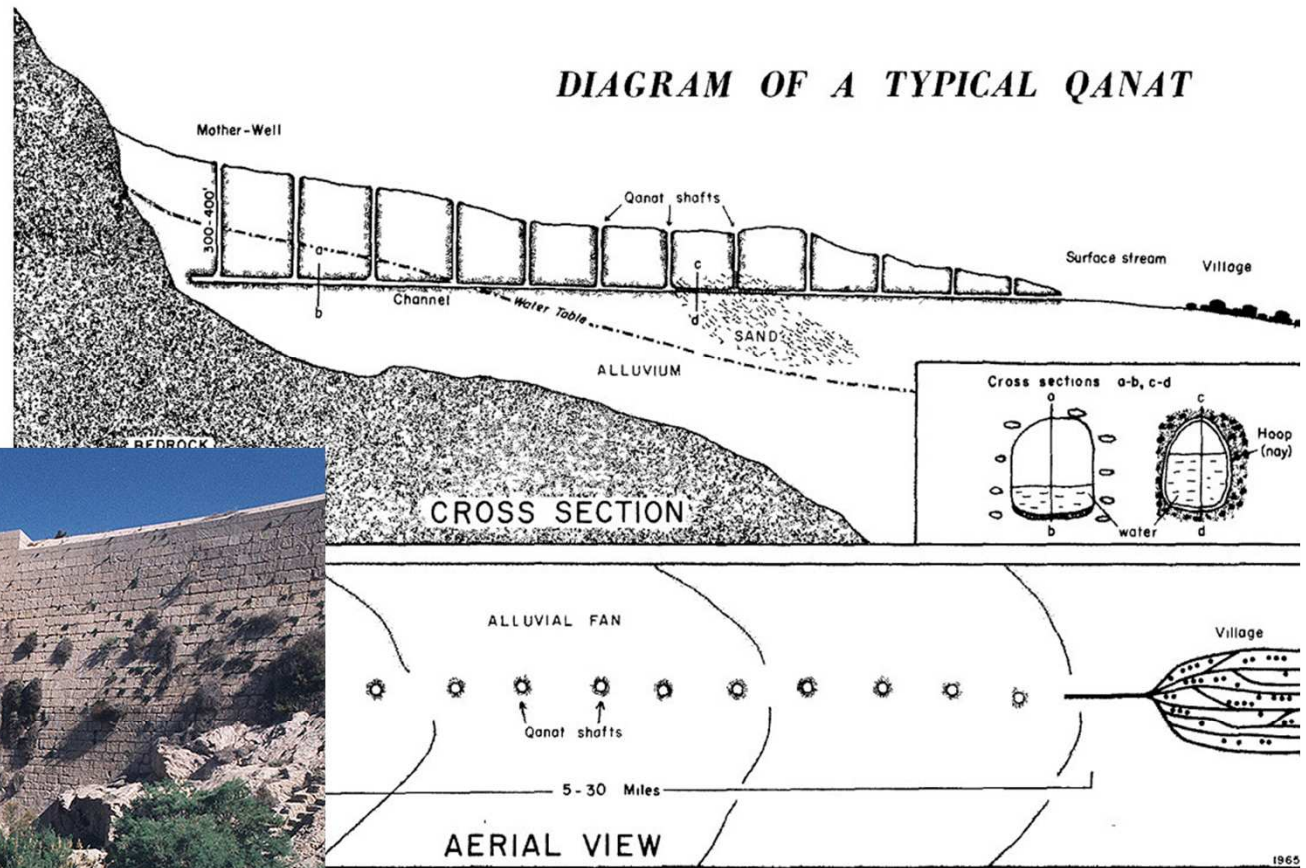


# Landscape



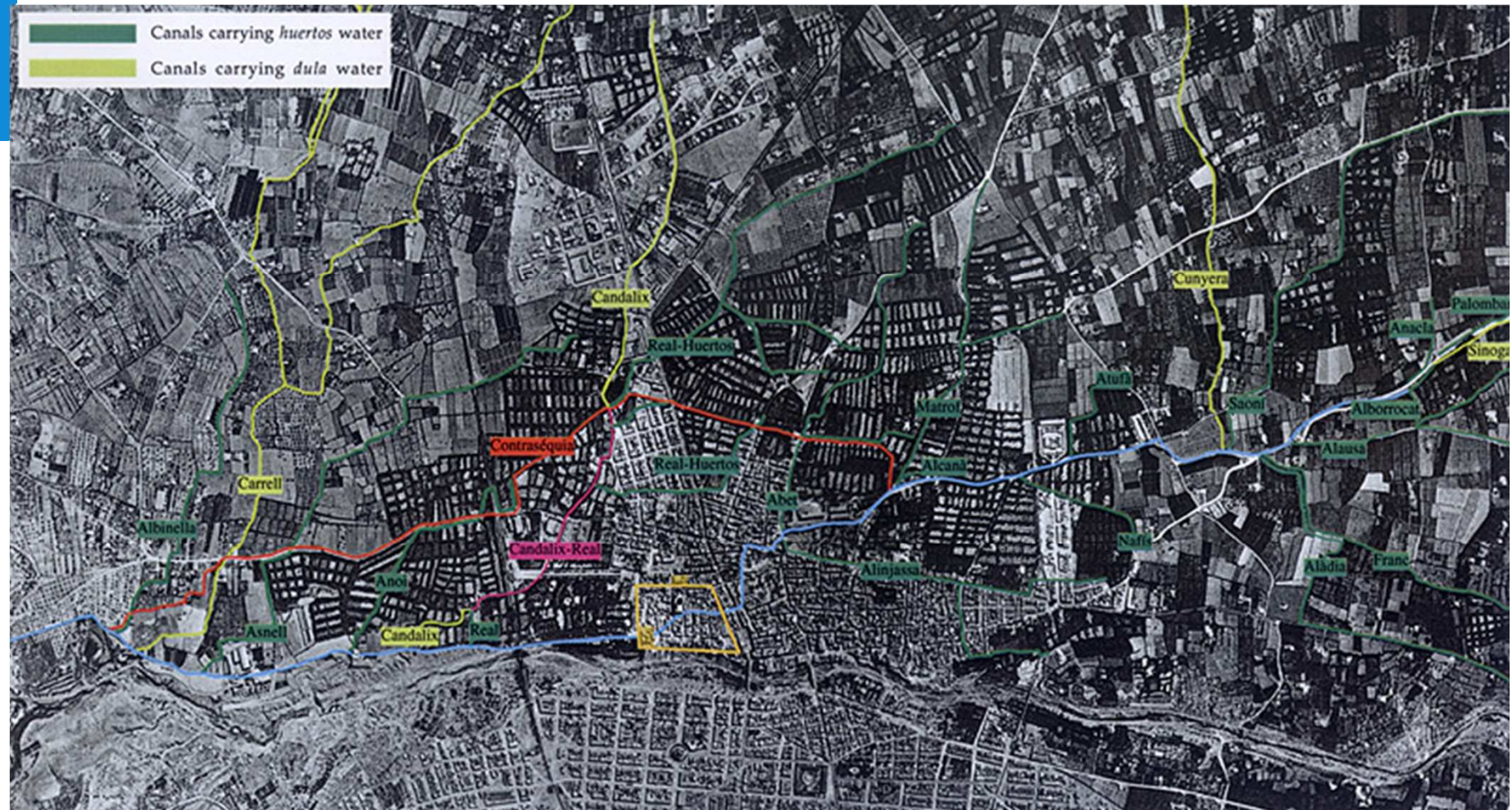


# Water sources





# Canal system





# Canals



Puente de hierro y Asequia de Marchena sobre el Rio Vinalupo

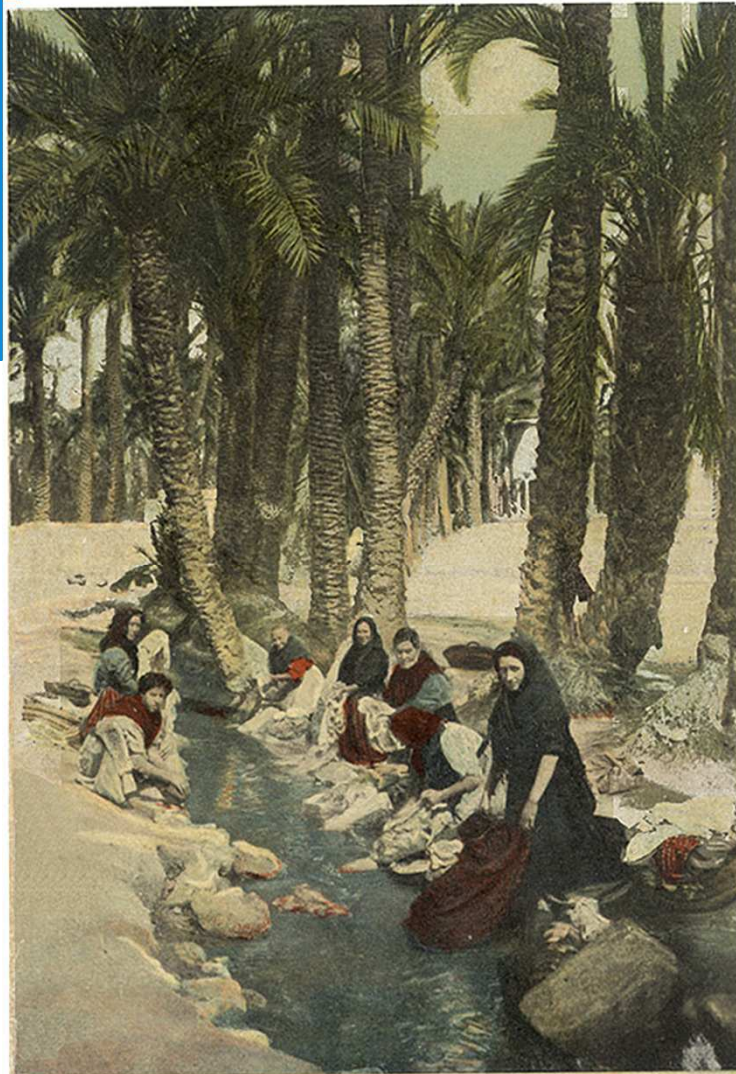


# Canals





# Walking along the water



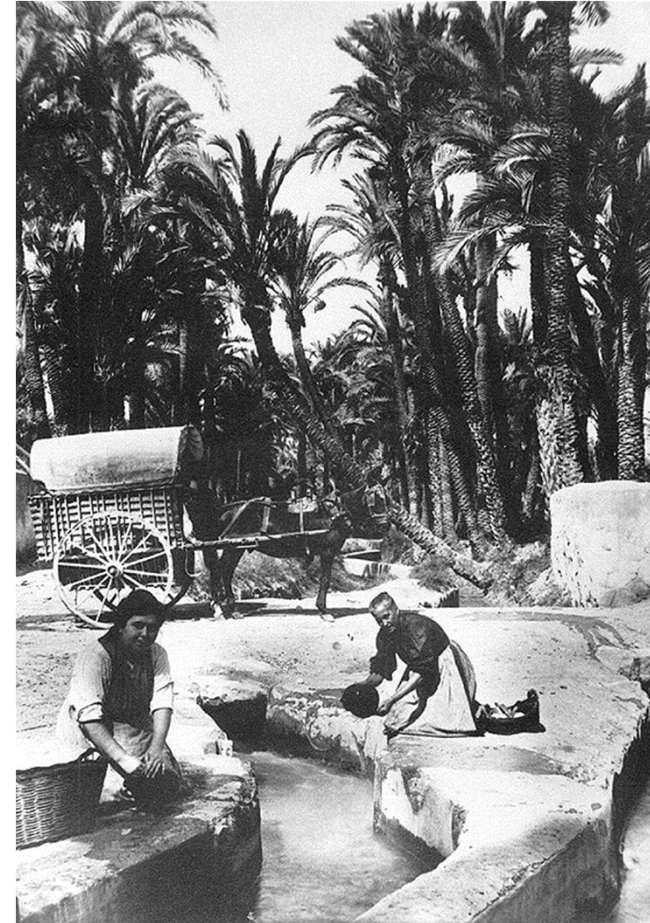
ELCHE. Acequia de Candalish







## Walking further along the water





# Canals





# What is irrigation about?

**A structure as expression of water rights.**

**Remember?**

