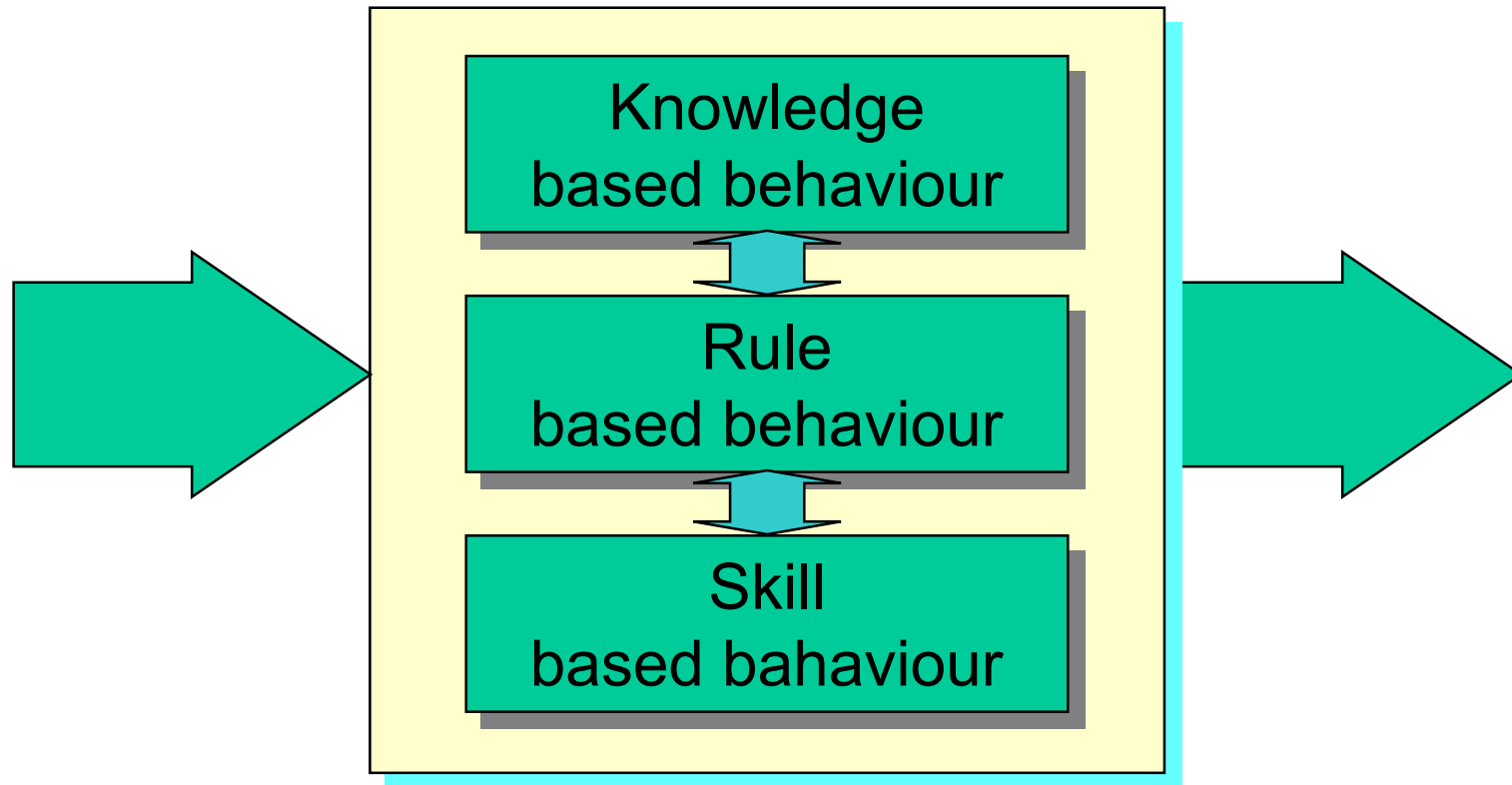
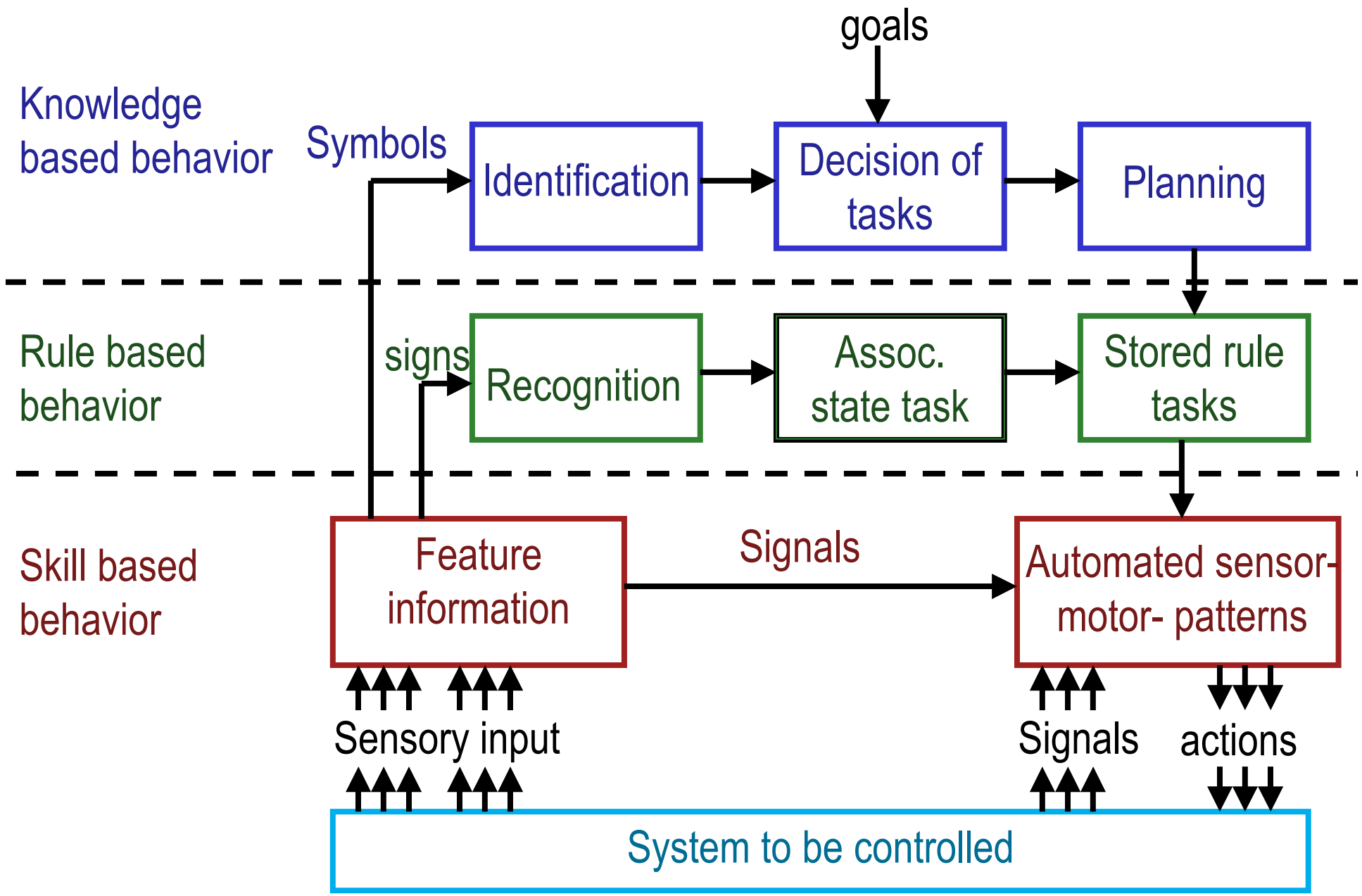
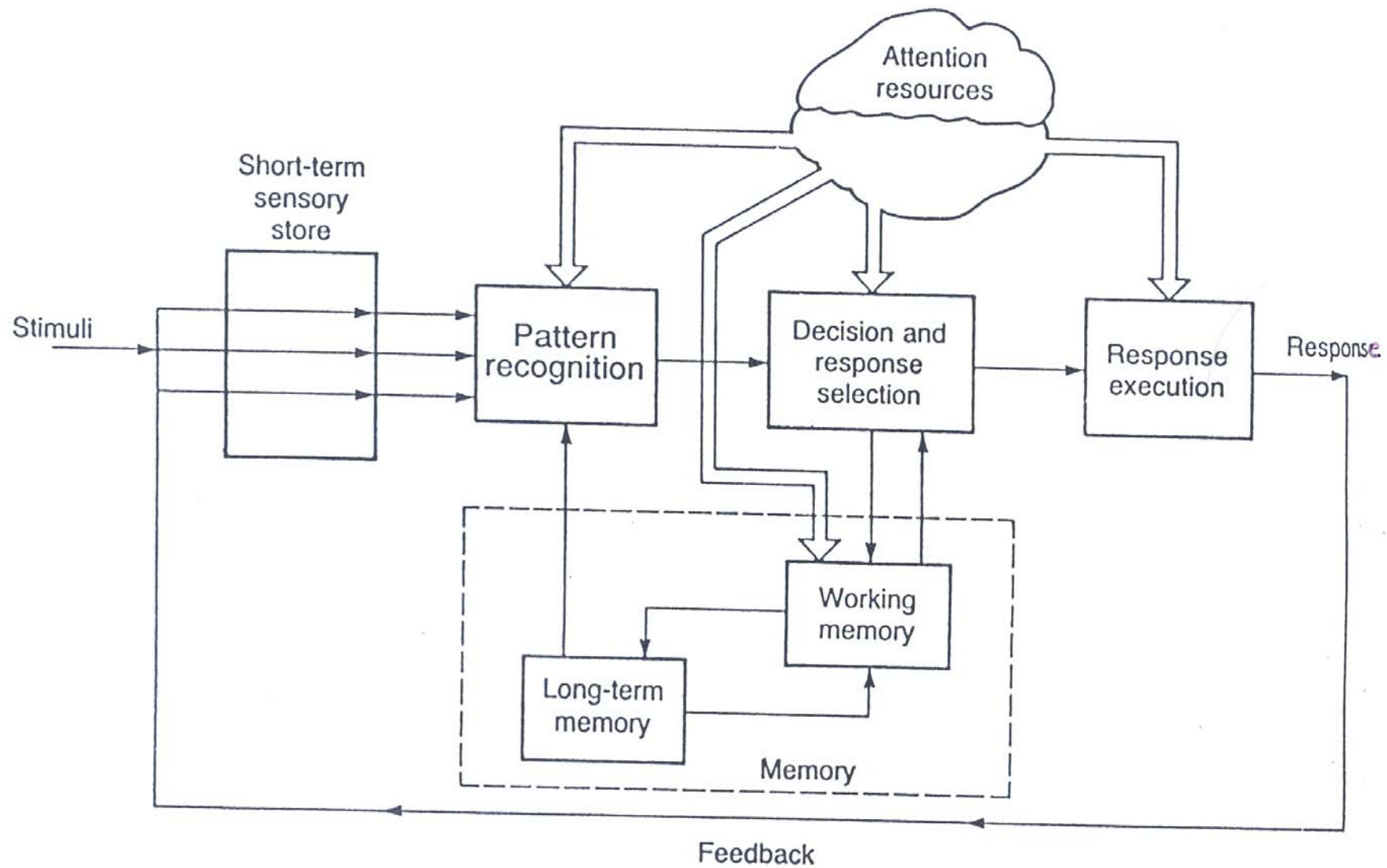


# SRK model Rasmussen

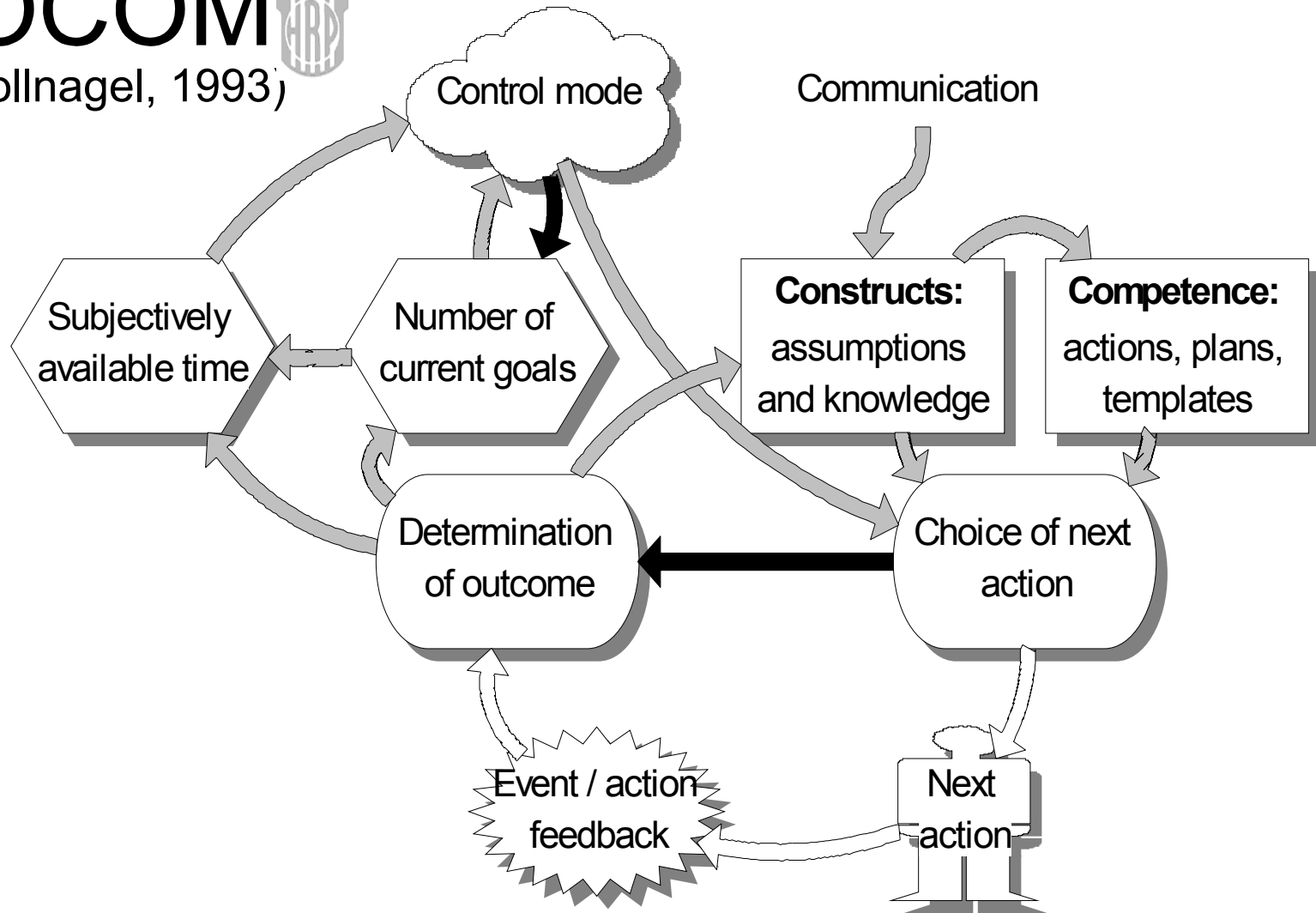




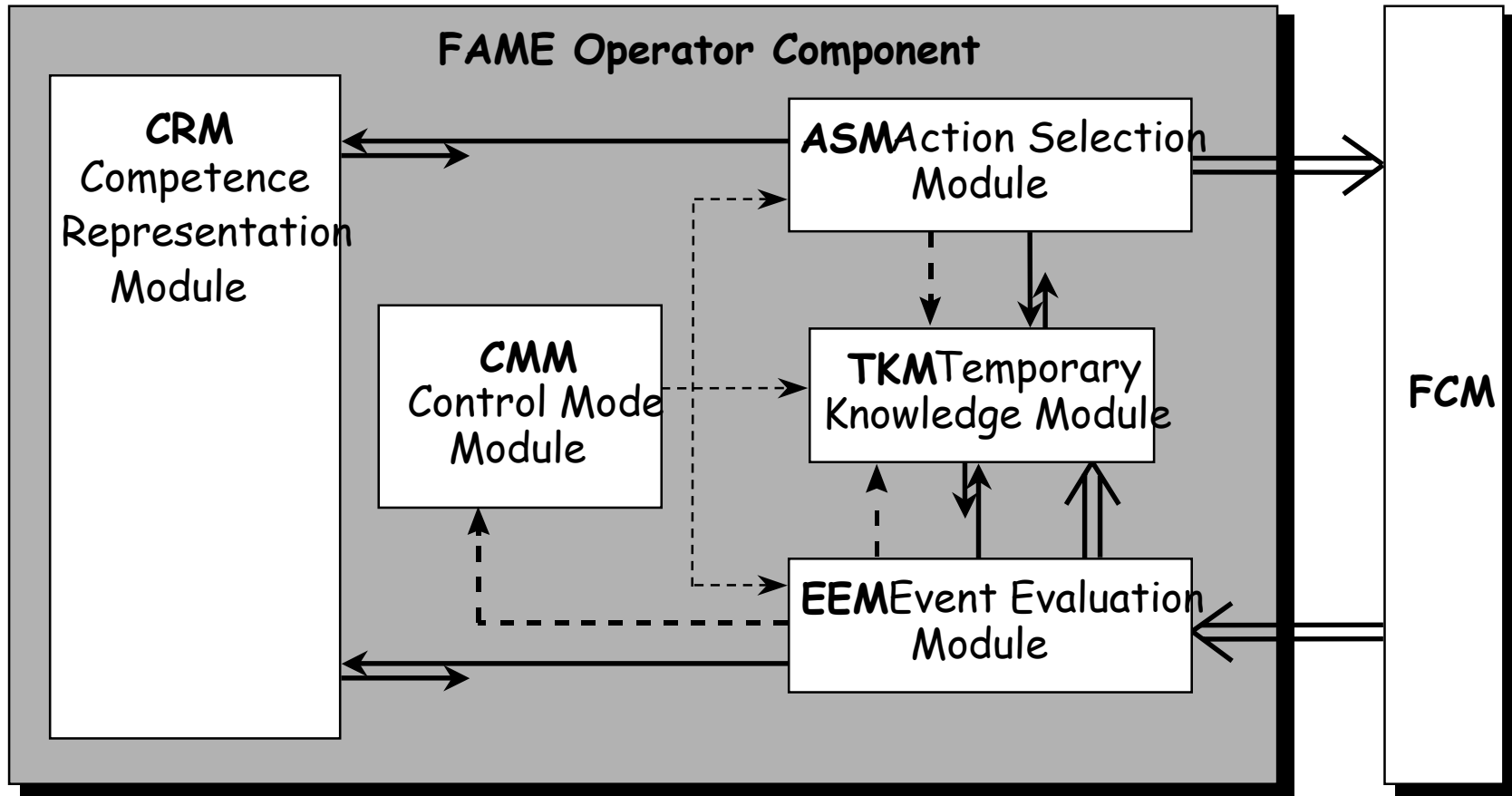


# COCOM

(Hollnagel, 1993)



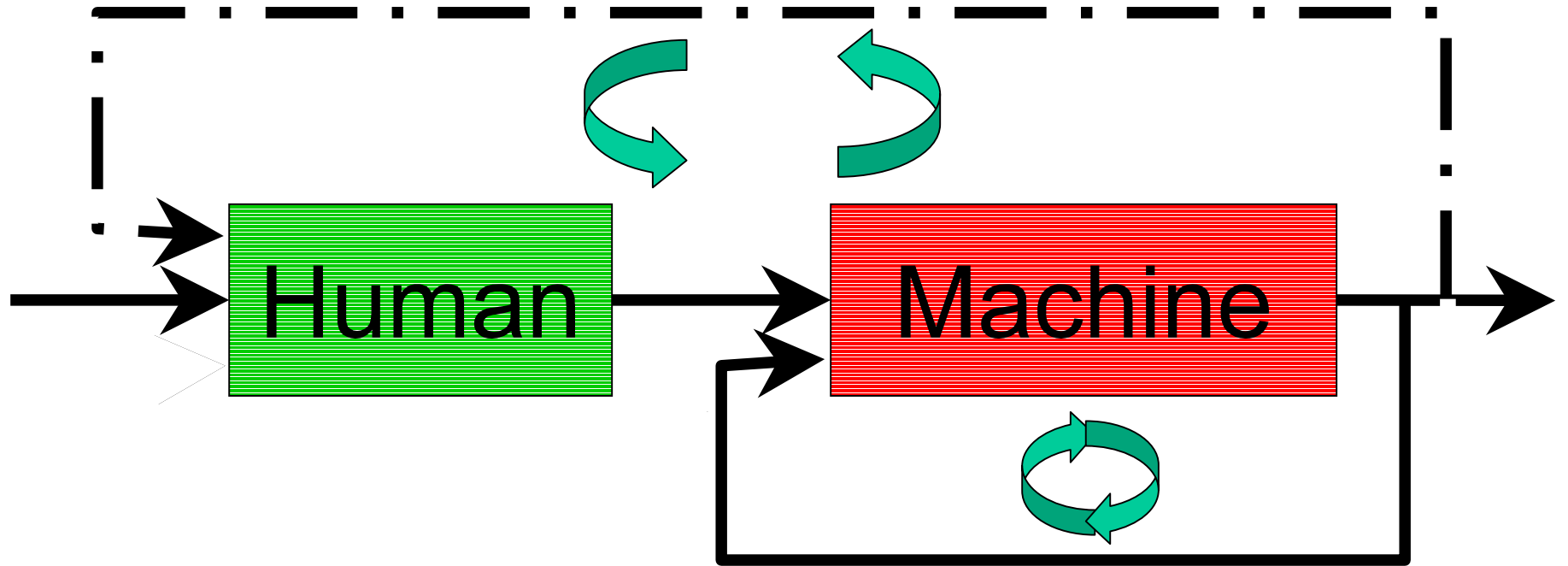
# COCOM



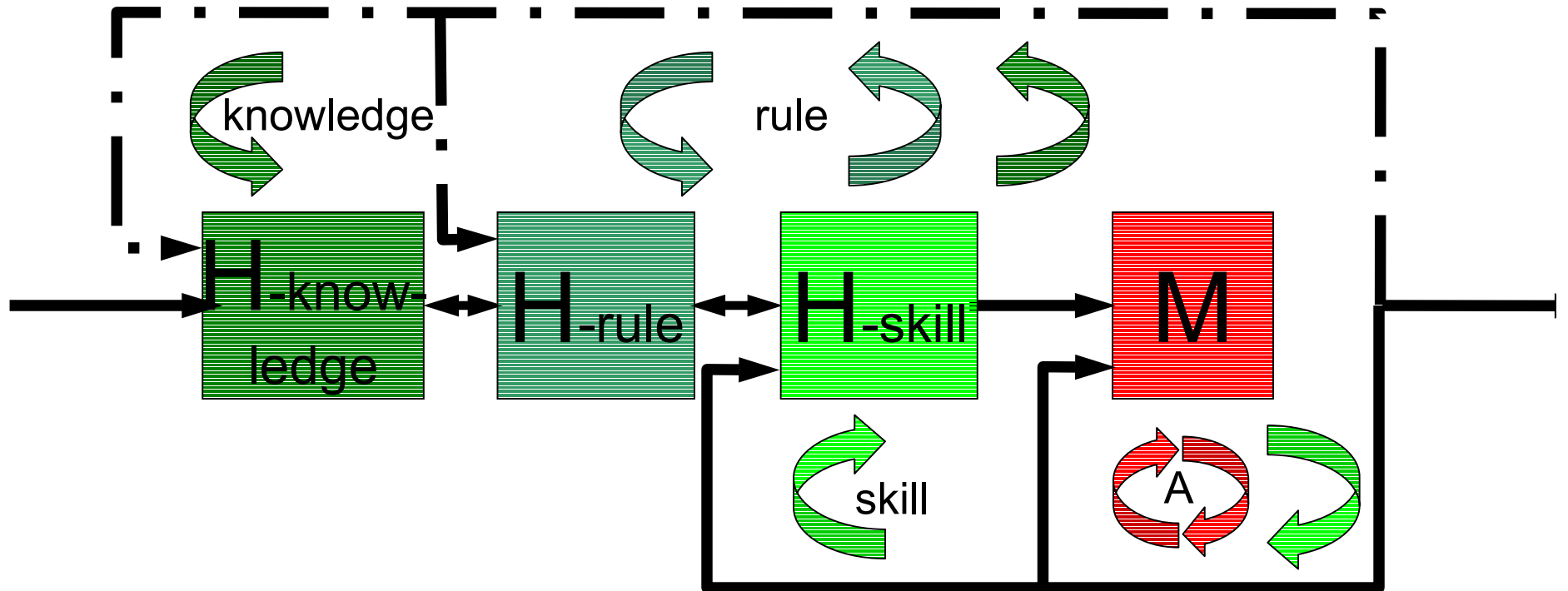
 *Input / Output signal*       *Interrogation channel*       *Information channel*

(Bye, Brendeford, Hollnagel, Hoffmann, Mohn, 1998)

# Supervisory Control



# Direct- Intermittent & Supervisory control



# Modeling different types of behavior

Skill

Cross over model  
Optimal control Model

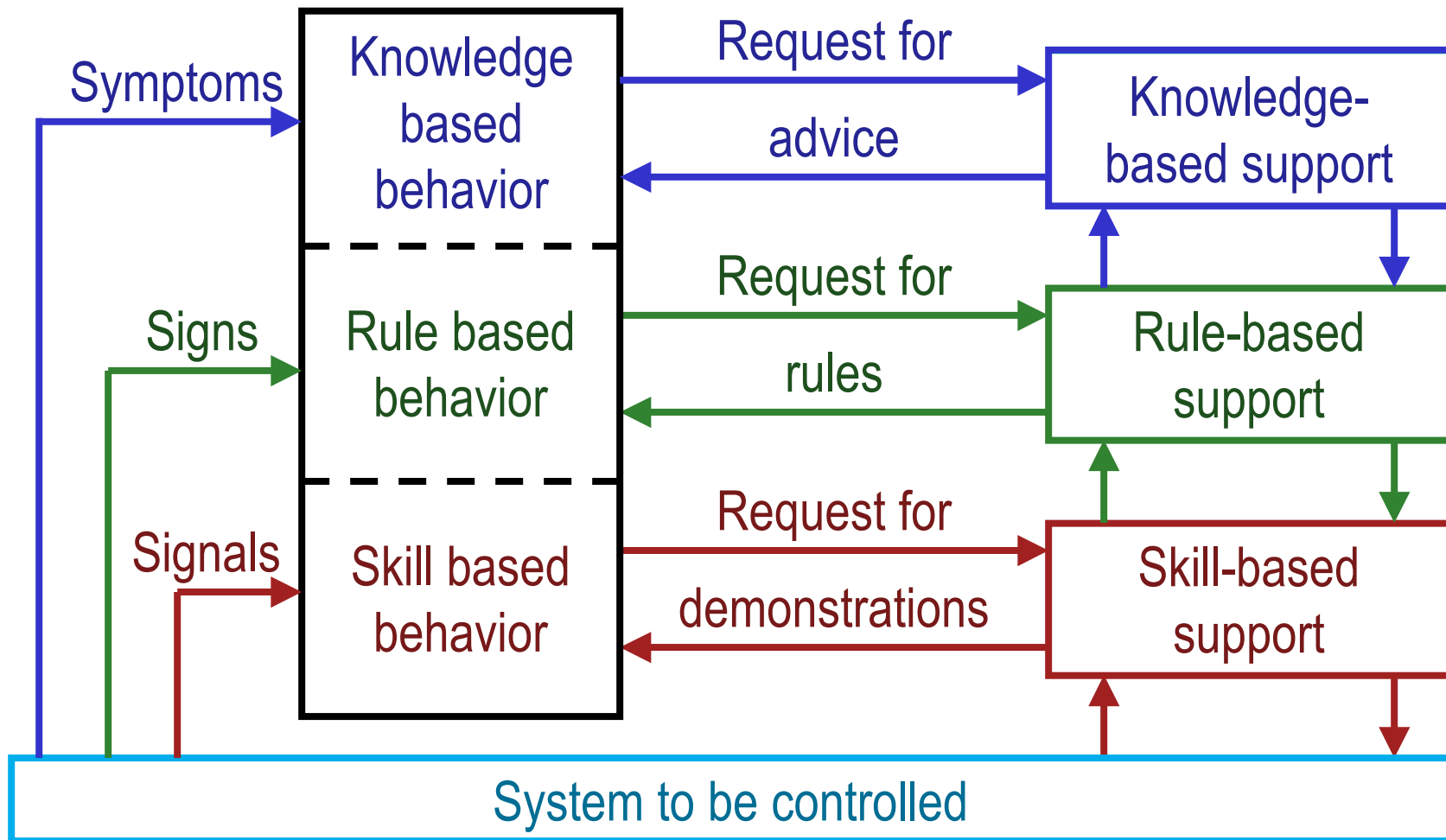
Rule

PROCRU

Knowledge

??





# Operator interaction

Rasmussen's 3 level behavioral model:

- skill-base behavior
- rule based behavior
- knowledge base behavior

A major problem in design of man-machine interfaces is to properly support knowledge-based behavior in supervisory control.

➤ Present information in a format appropriate to knowledge based behavior so that effective mental representations can be developed.

