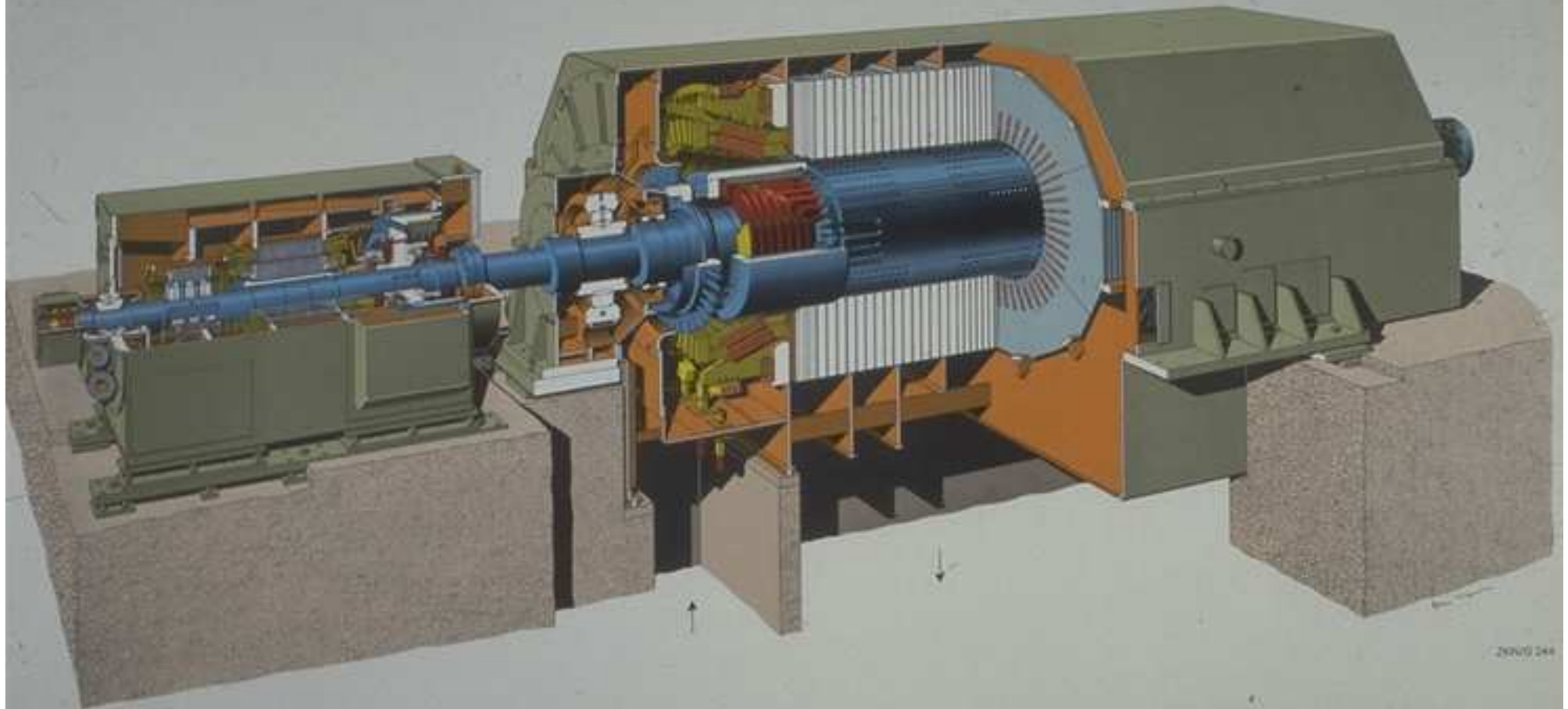


**BBC**  
BROWN BOVERI



2820/244

**Luftgekühlte Turbogeneratoren Typ WX**  
eigenventiliert mit bürstenloser Erregung Typ WBT

**Technische Daten**

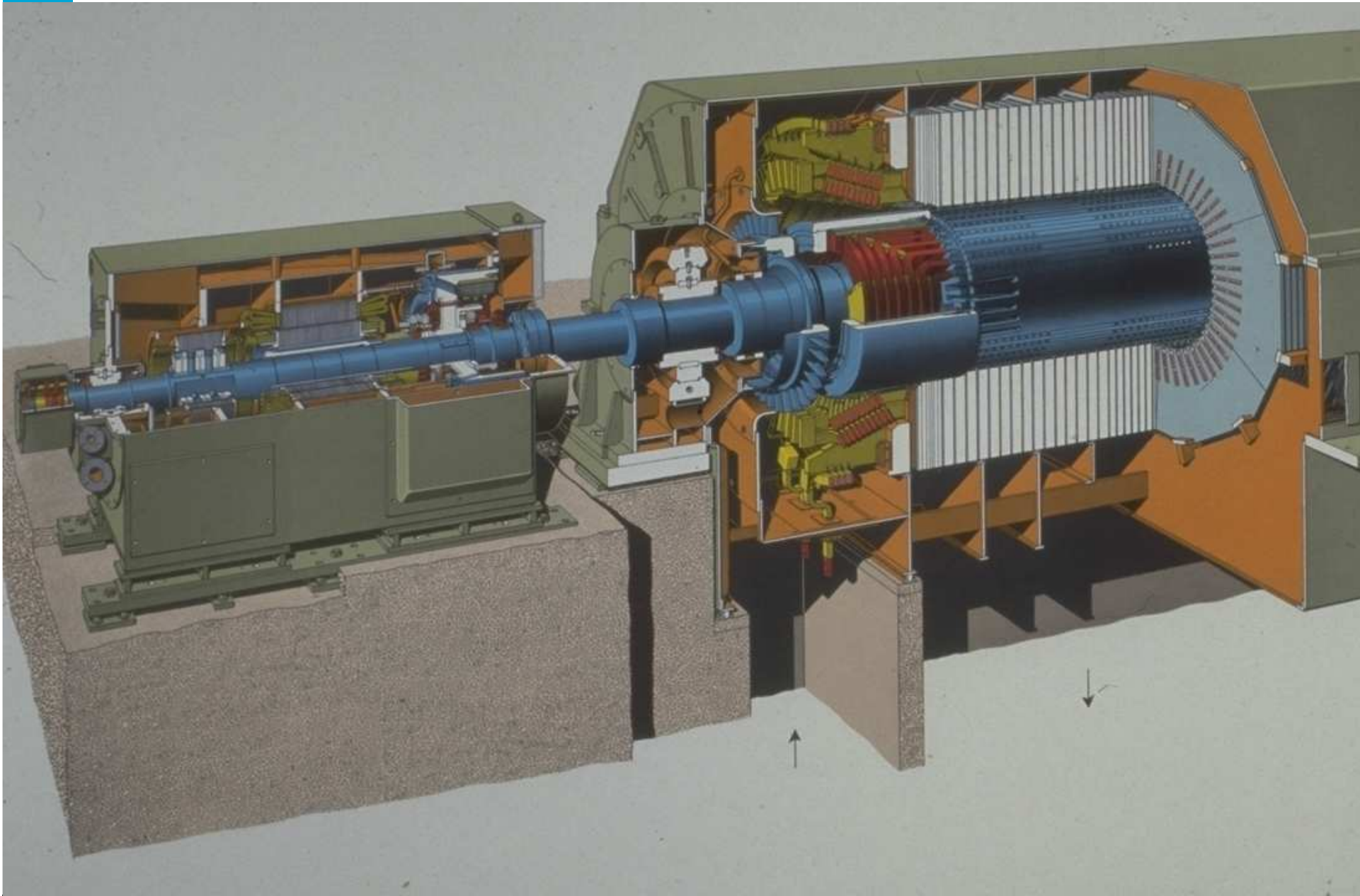
Leistung bei 40 °C 20-100 MW  
Leistung bei 40 °C mit cos φ = 0,8 18-104 MW  
Spannung 5-15 kV Frequenz 50 und 60 Hz  
Drehzahl 3000 und 3600 U/min

**Air-cooled turbo-alternators type WX**  
self-ventilated with brushless excitation type WBT

**Technical data**

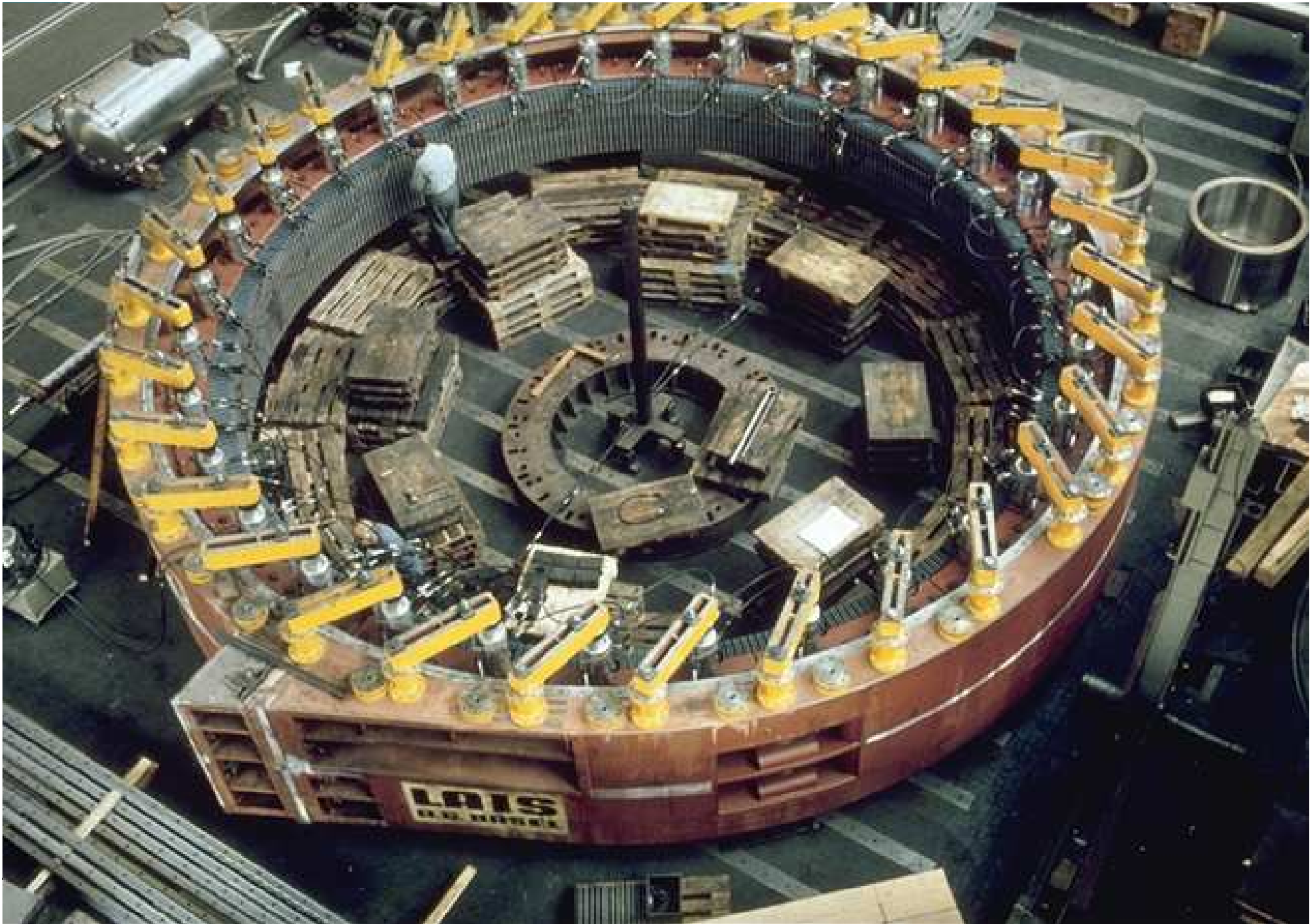
Output at 40 °C 20-100 MW  
Output at 40 °C with p.f. 0,8 18-104 MW  
Voltage 5-15 kV Frequency 50 and 60 Hz  
Speed 3000 and 3600 rpm

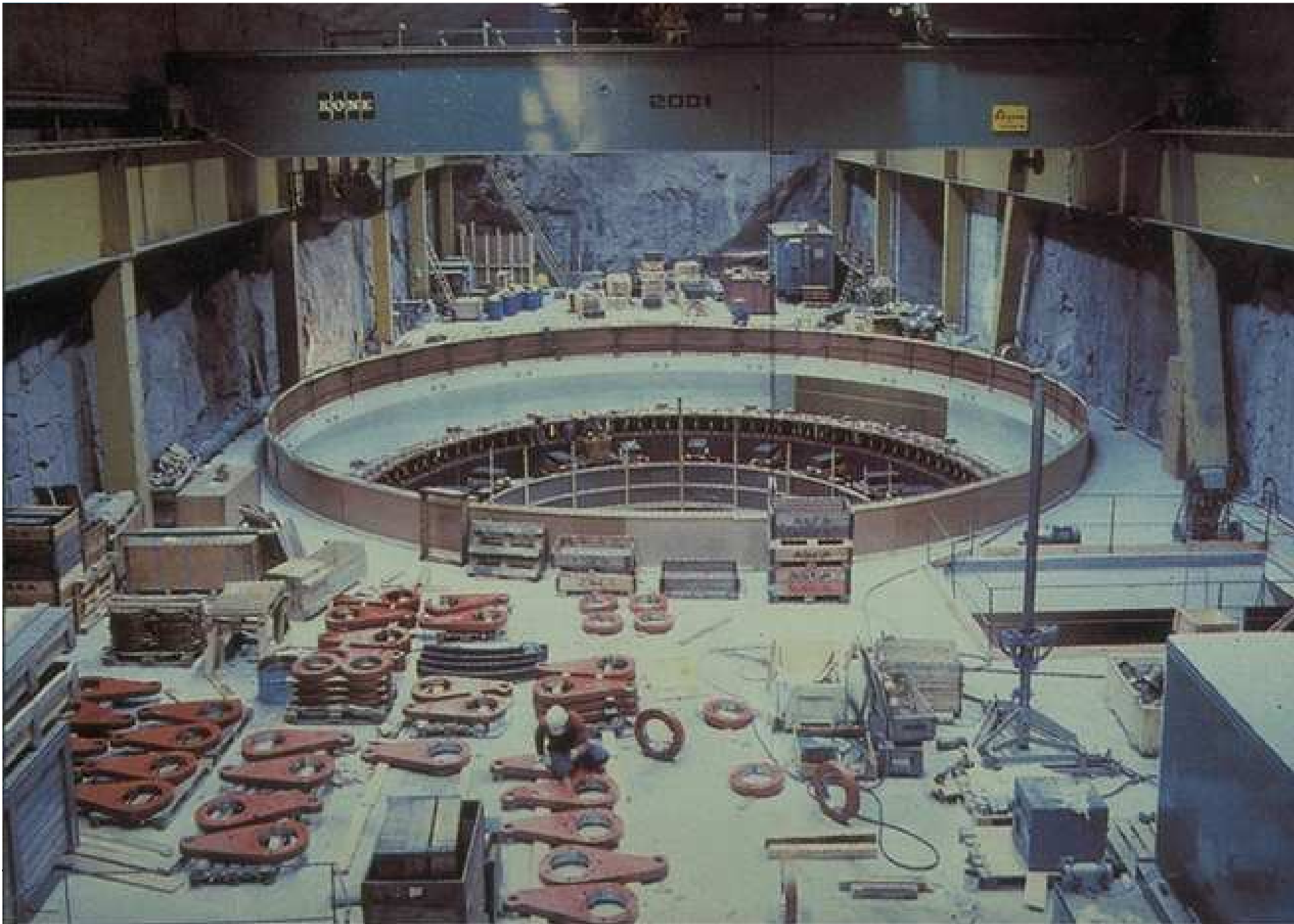


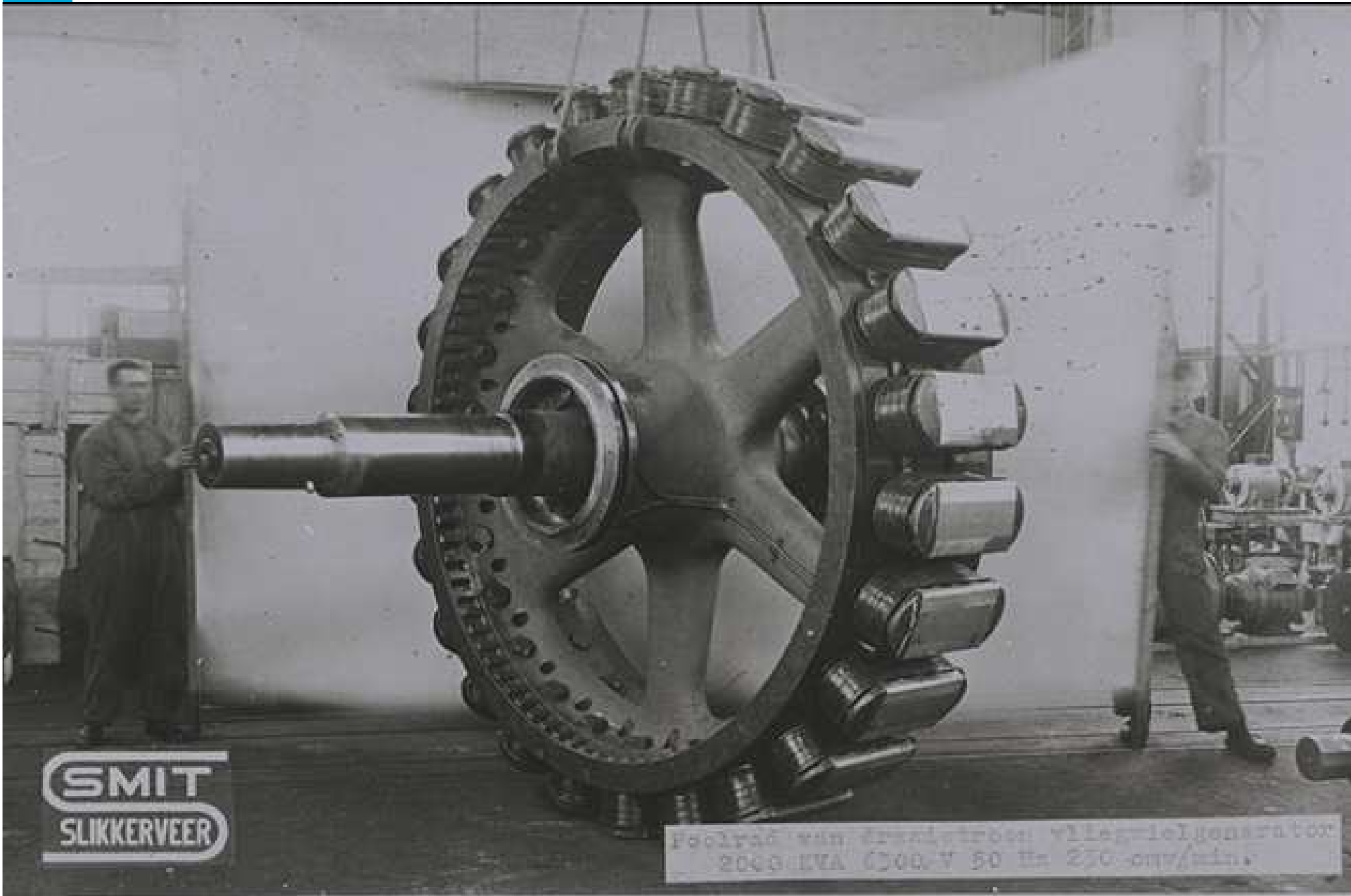












SMIT  
SLIKKERVEER

Poelrak van draaibank vliegtuiggenerator  
2000kVA 6300 V 50 Hz 270 omv/min.









