



Mt501 Hydromechanica 1

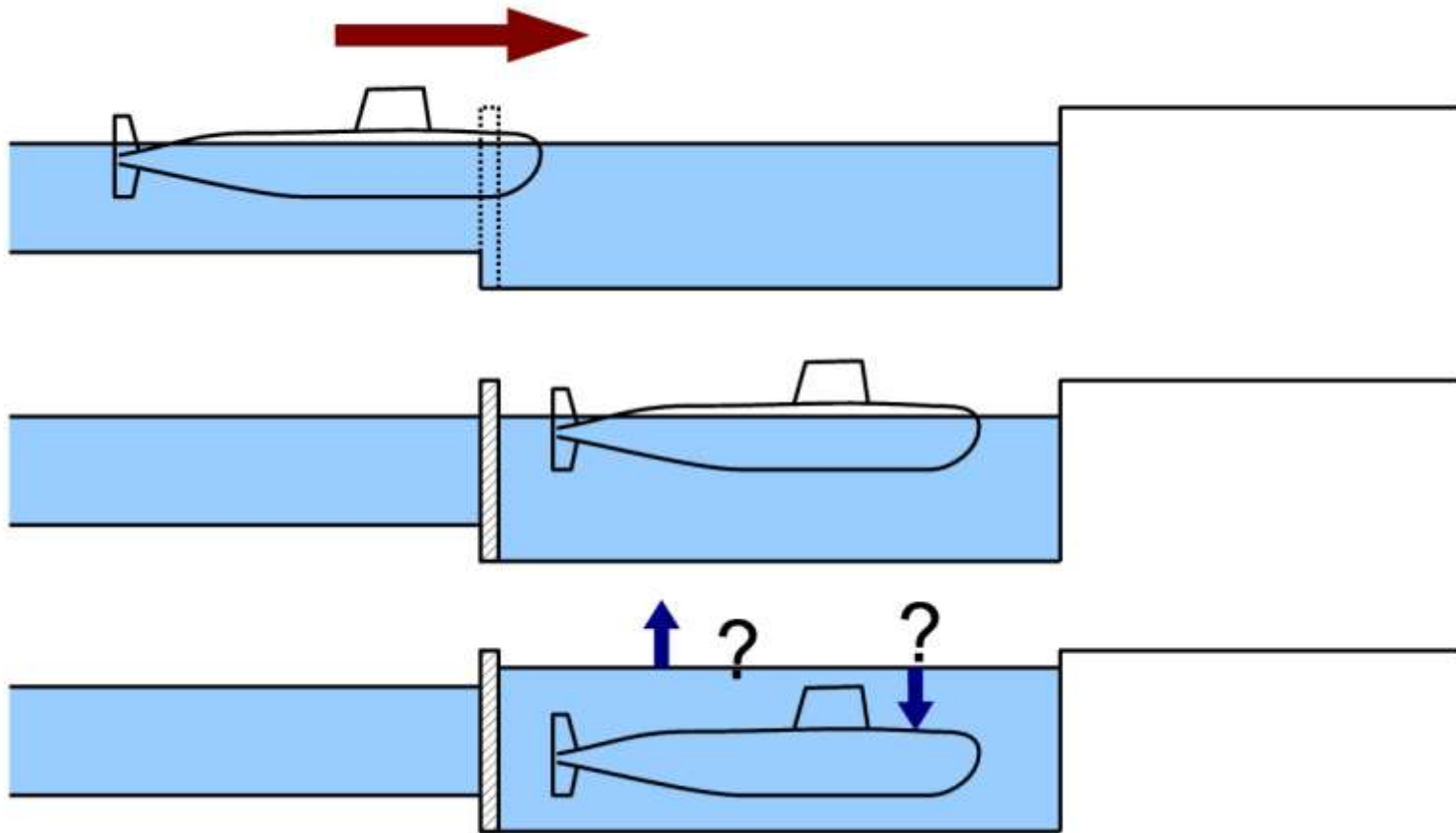
College 2

Pepijn de Jong

05-02-2010

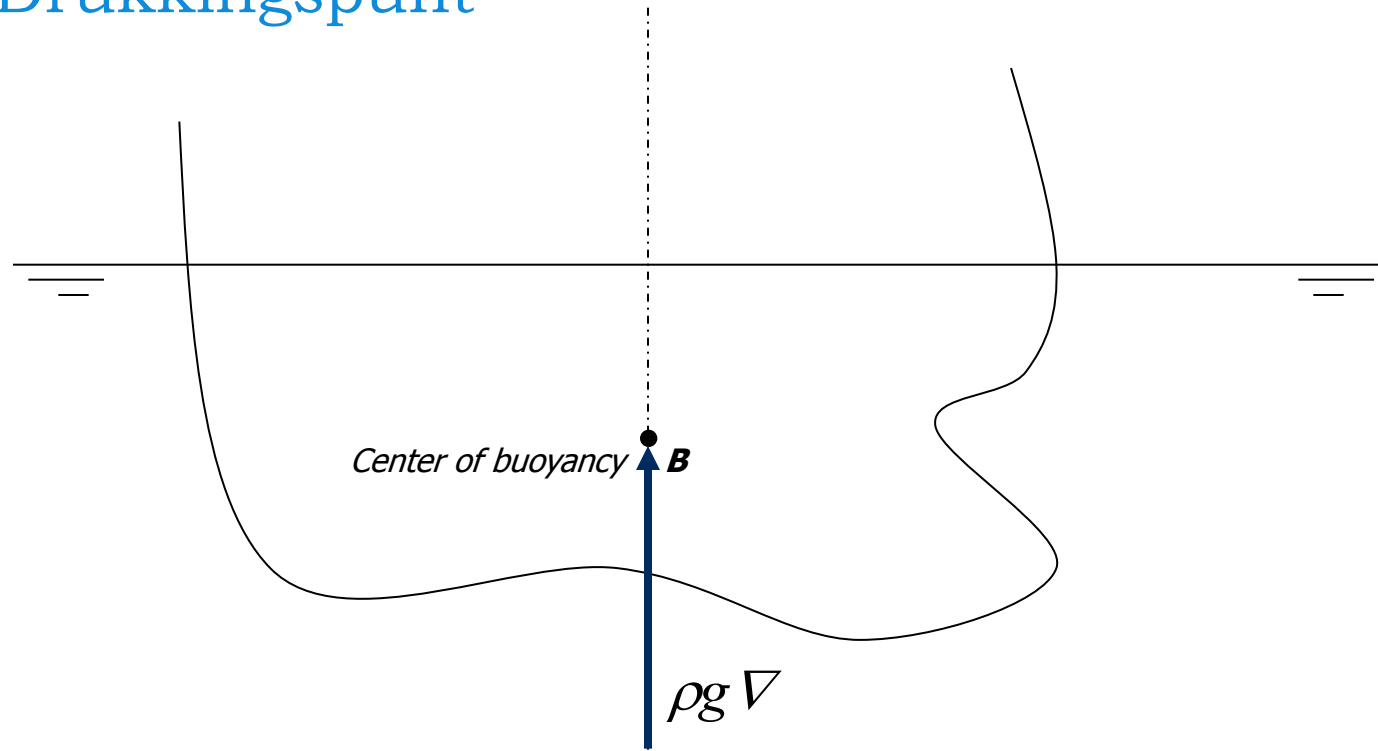
Hoofdstuk 2 Hydrostatica

Archimedes (tentamenvraag?)



Hoofdstuk 2 Hydrostatica

Drukkingspunt



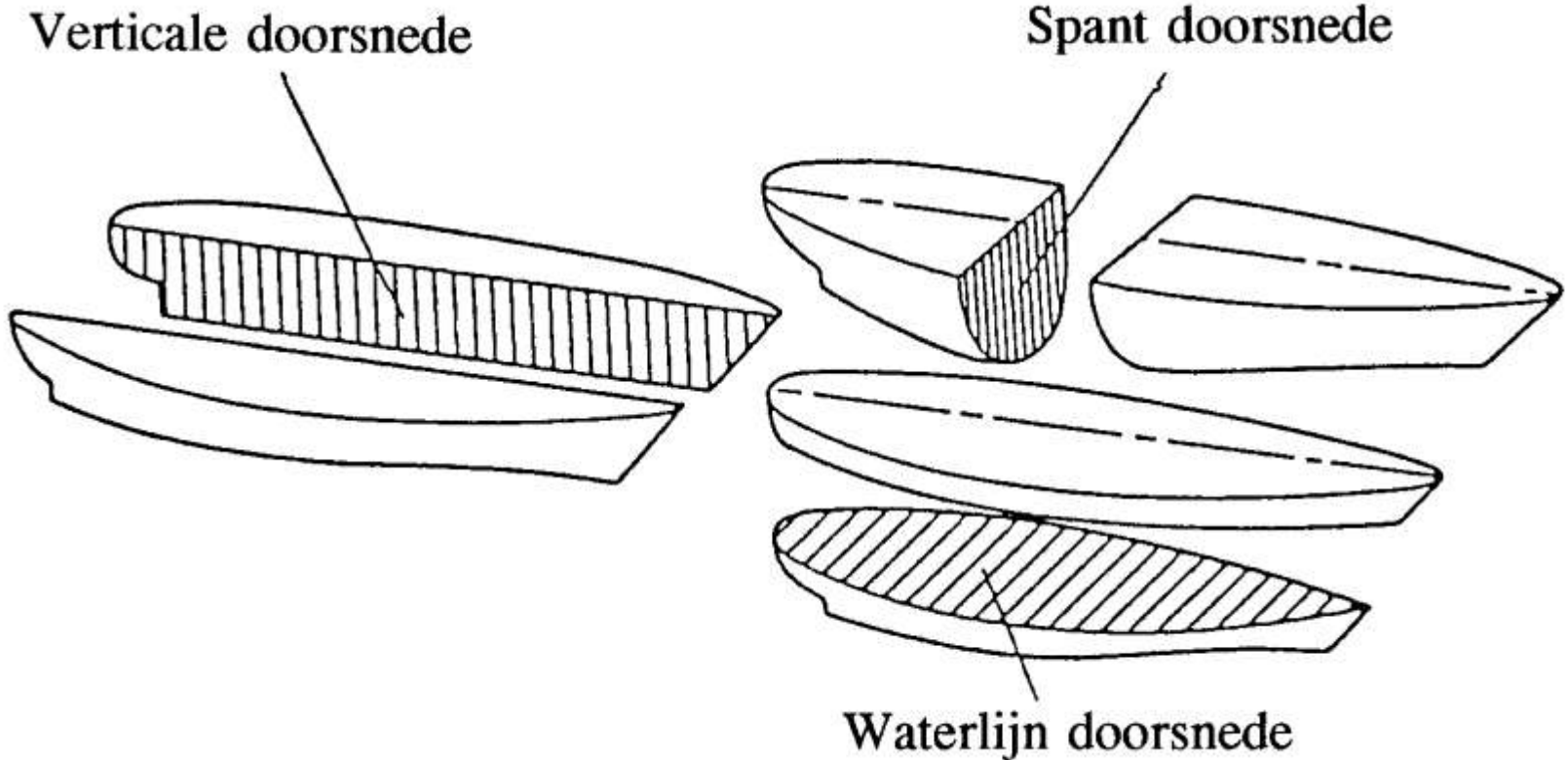
- Drukkingspunt is aangrijpingspunt opwaarste kracht
- Gelijk aan het zwaartepunt van het **verplaatste** water

Hoofdstuk 3 Beschrijving geometrie

Mt501 Hydromechanica 1

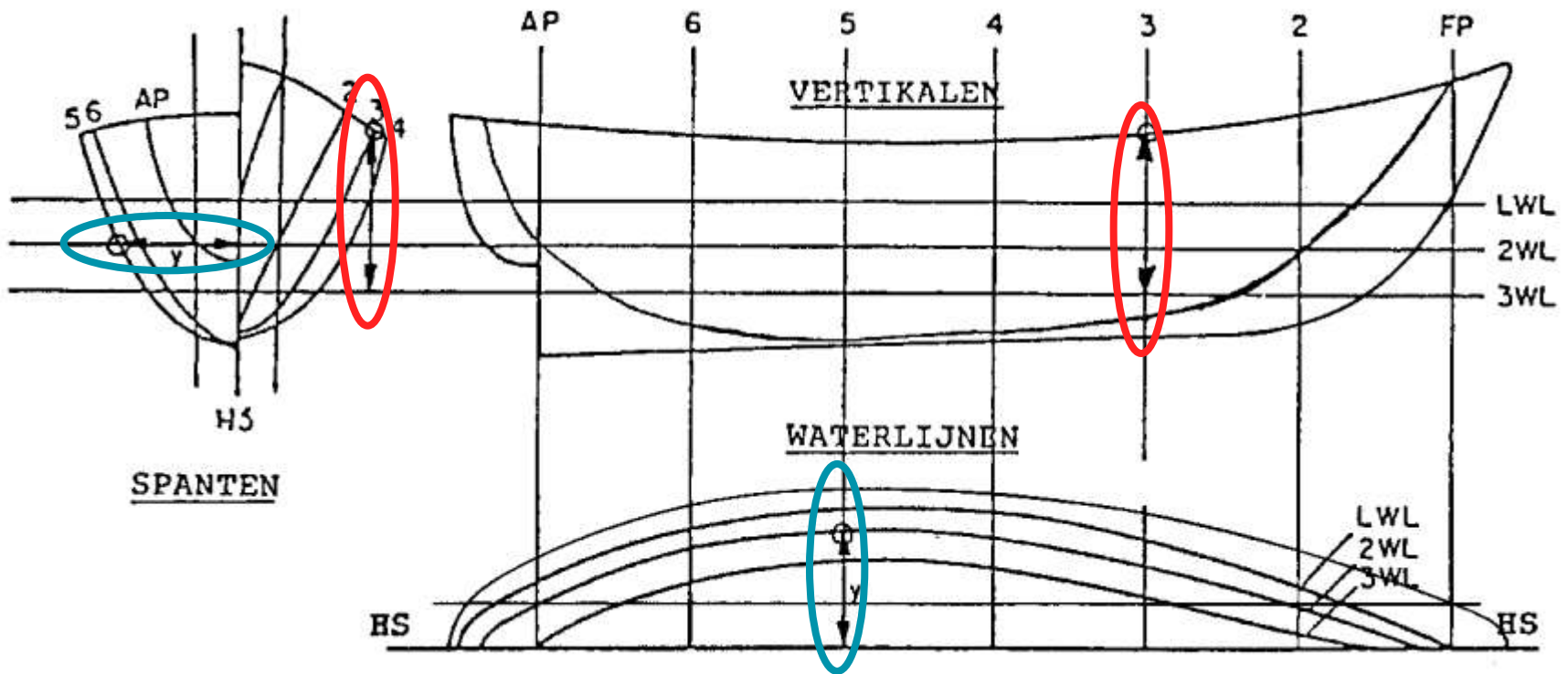
Beschrijving geometrie

Het lijnenplan



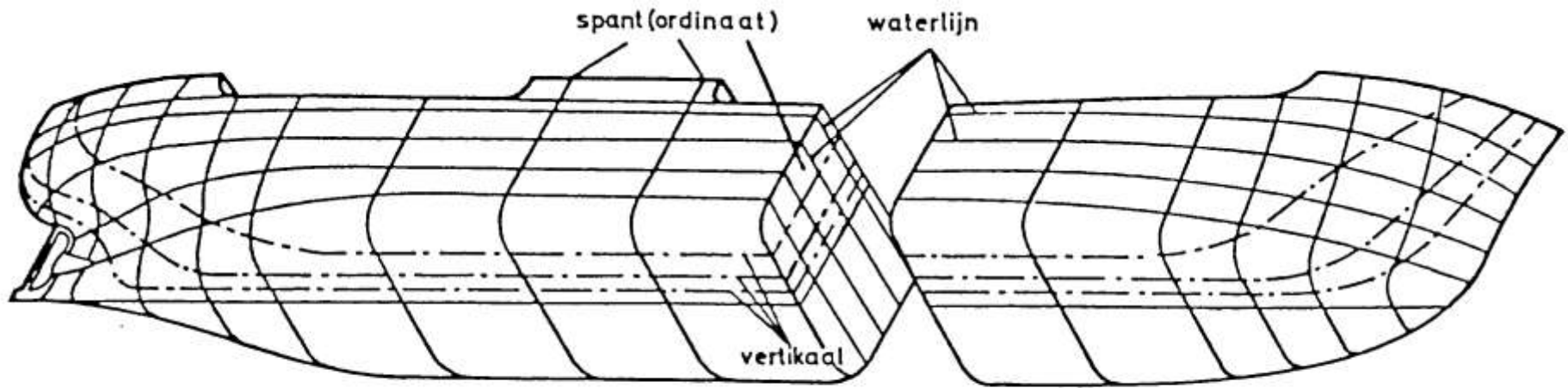
Beschrijving geometrie

Het lijnenplan



Beschrijving geometrie

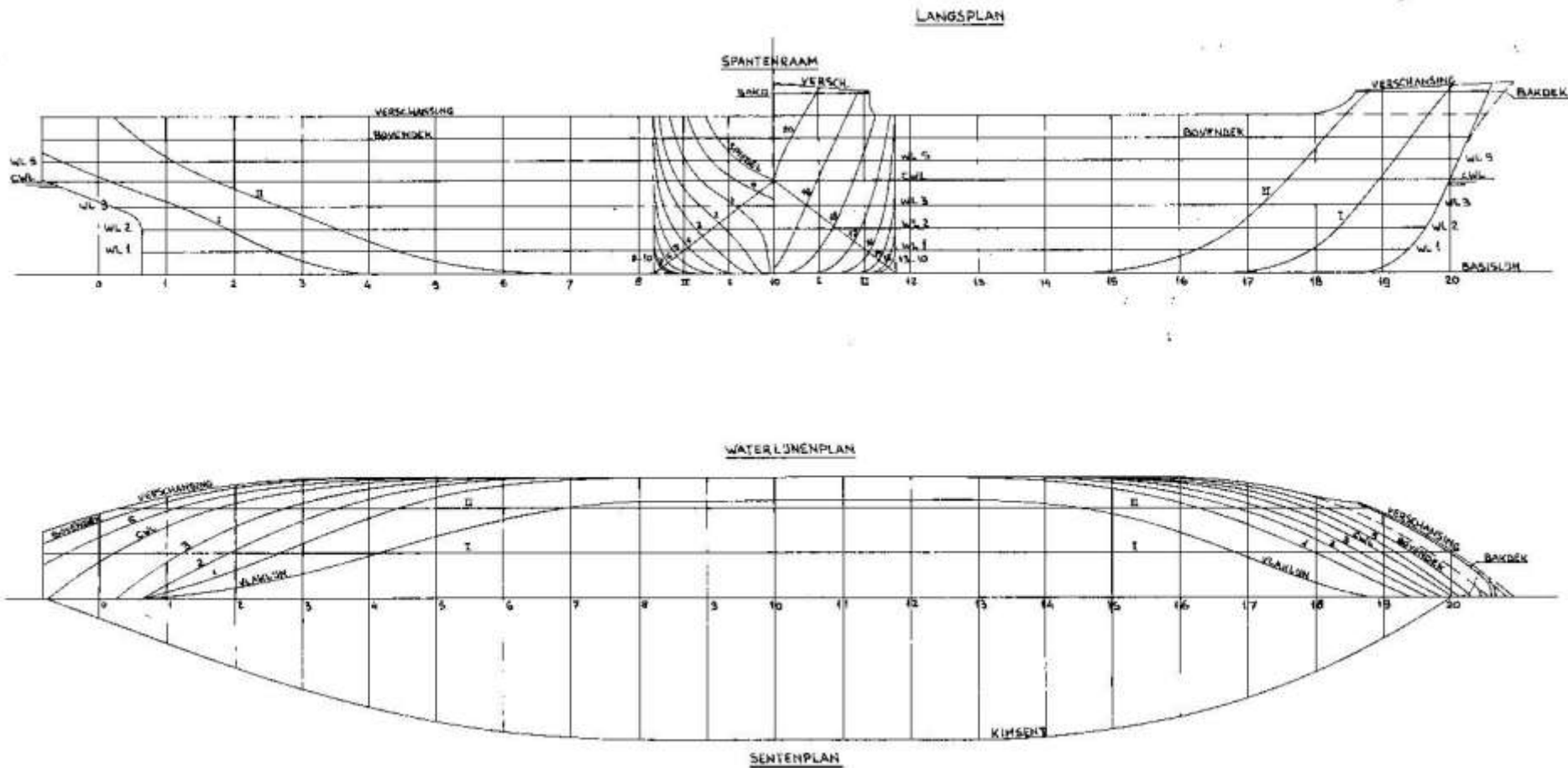
Het lijnenplan



Perspectief schets van de gebruikte doorsnede projecties voor het vastleggen van de vorm.

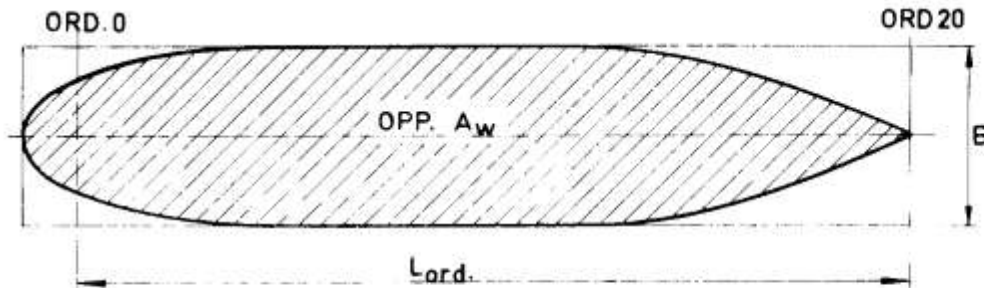
Beschrijving geometrie

Voorbeeld lijnenplan



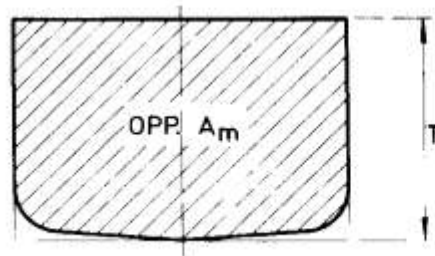
Beschrijving geometrie

Vormcoëfficiënten



LASTLUN - COËFFICIËNT

$$C_{wp} = \frac{A_w}{L_{ord} \cdot B}$$

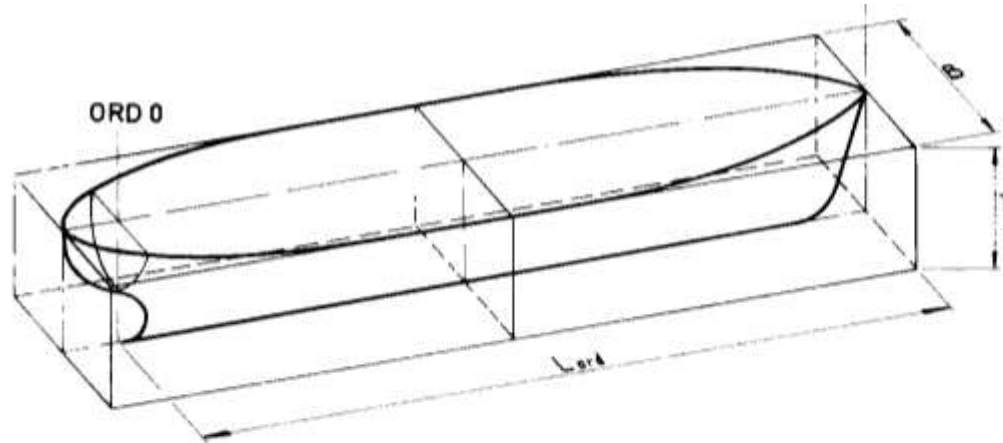


GROOTSPANT - COËFFICIËNT

$$C_m = \frac{A_m}{B \cdot T}$$

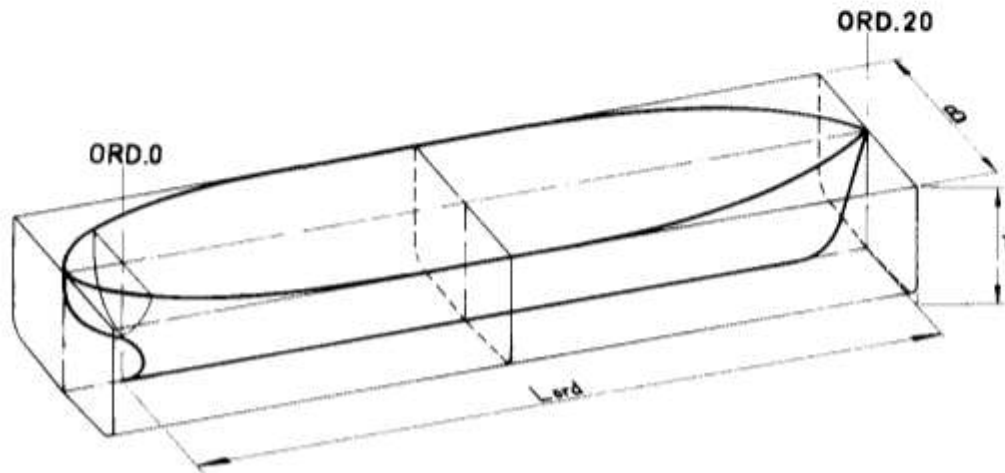
Beschrijving geometrie

Vormcoëfficiënten



BLOK - COËFFICIËNT

$$C_b = \frac{\nabla}{L_{ord} B T}$$



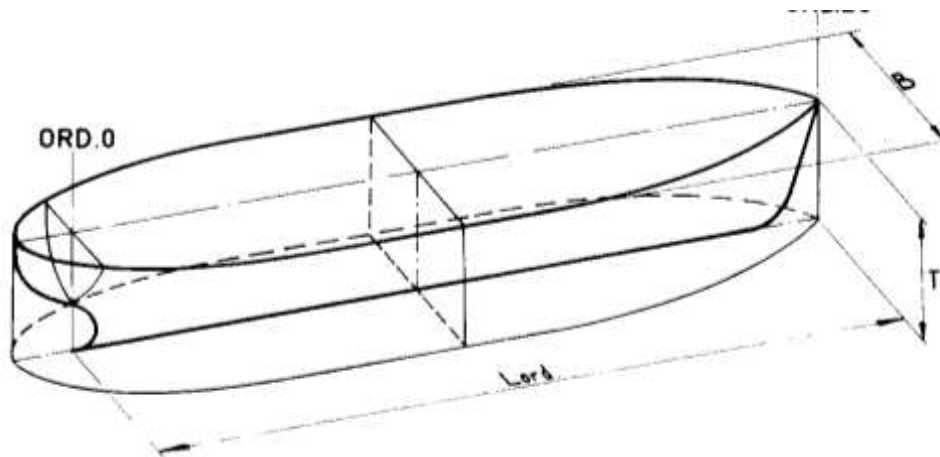
LANGSSCHEEPSE

PRISMATISCHE - COËFFICIËNT

$$C_p = \frac{\nabla}{A_m L_{ord}}$$

Beschrijving geometrie

Vormcoëfficiënten

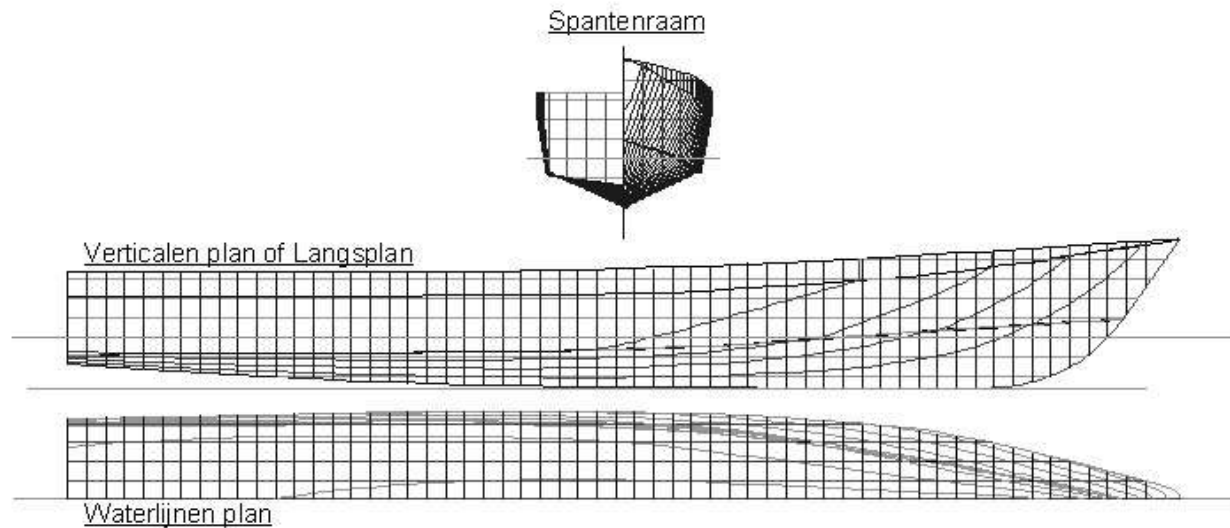


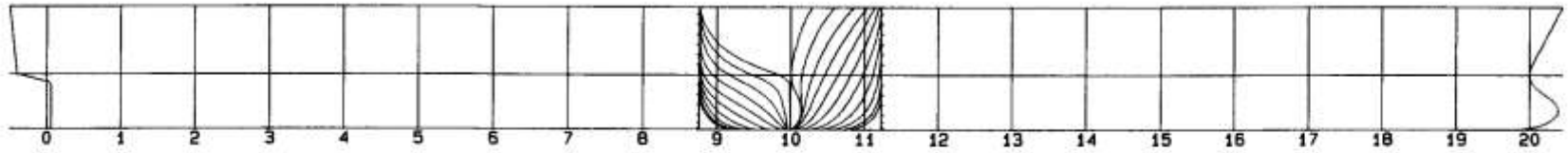
VERTIKALE
PRISMATISCHE - COEFFICIENT

$$C_{vp} = \frac{\nabla}{A_w T}$$

Beschrijving geometrie

Voorbeelden





Beschrijving geometrie

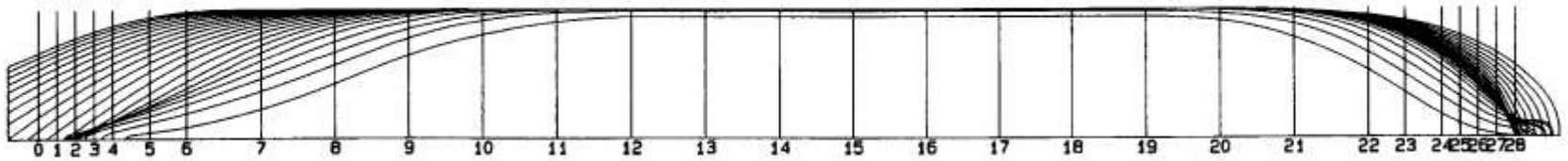
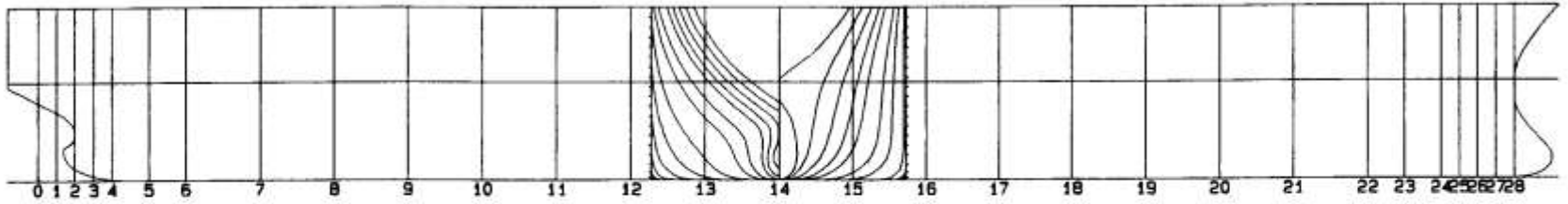
Voorbeelden



Beschrijving geometrie

Voorbeelden





Beschrijving geometrie

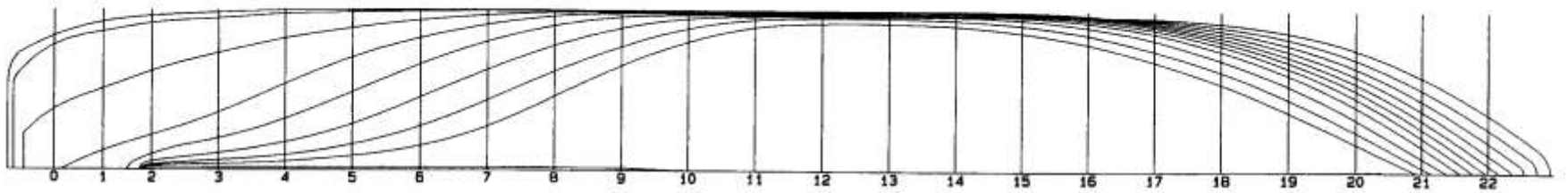
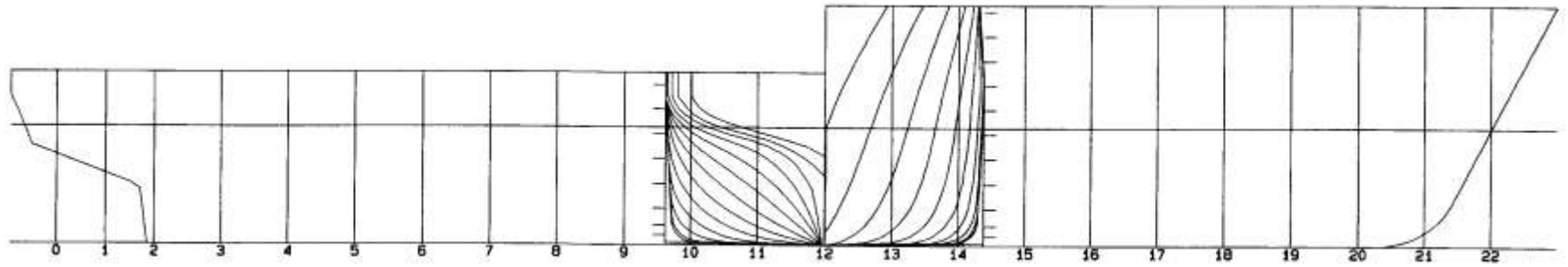
Voorbeelden



Beschrijving geometrie

Voorbeelden





Beschrijving geometrie

Voorbeelden



Beschrijving geometrie

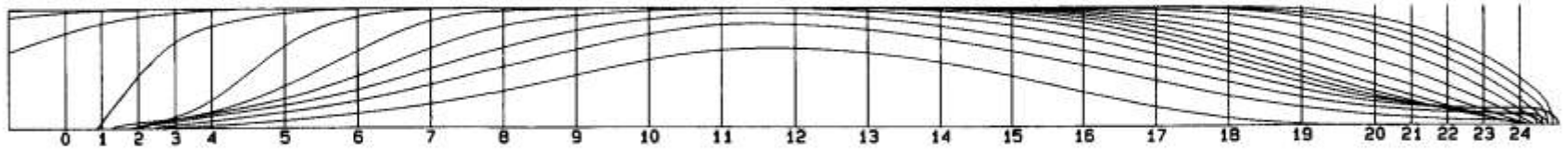
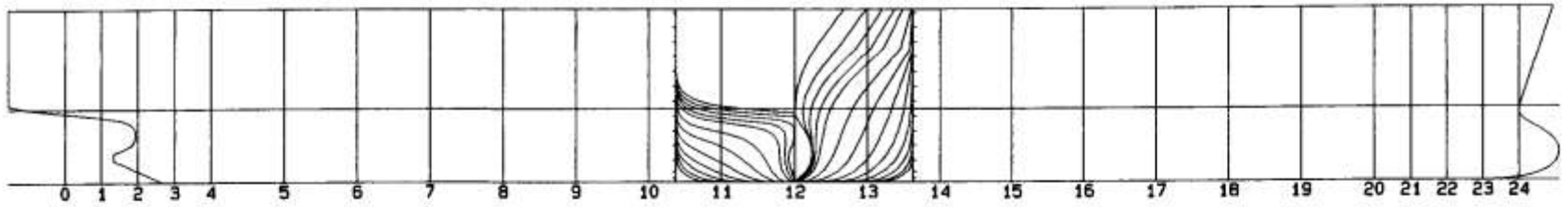
Voorbeelden



Beschrijving geometrie

Voorbeelden





Beschrijving geometrie

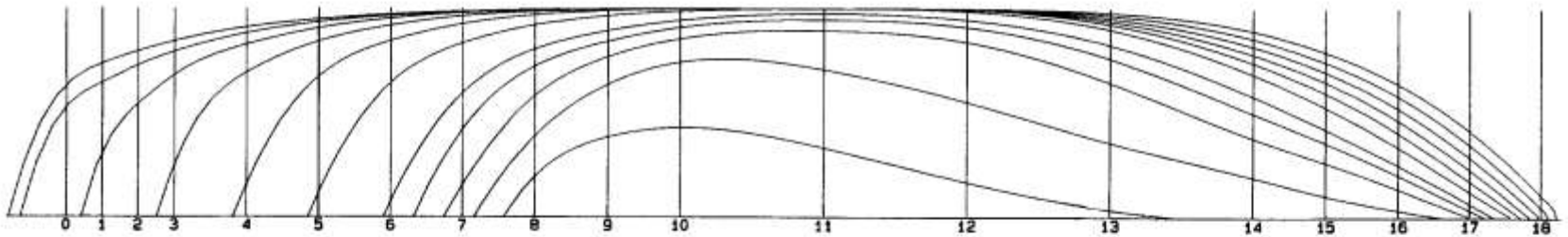
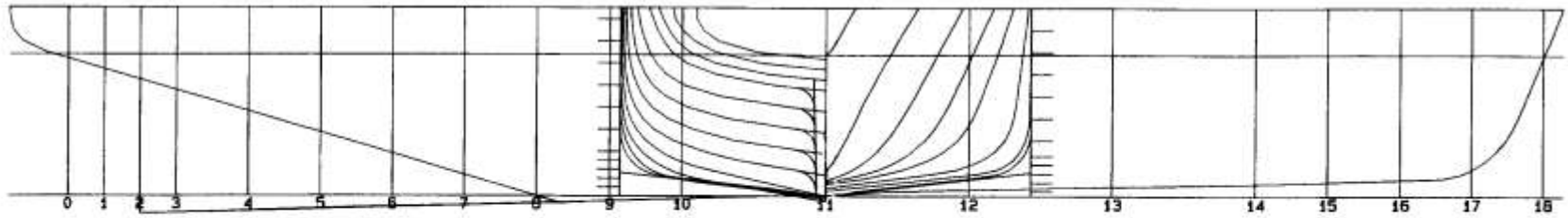
Voorbeelden



Beschrijving geometrie

Voorbeelden





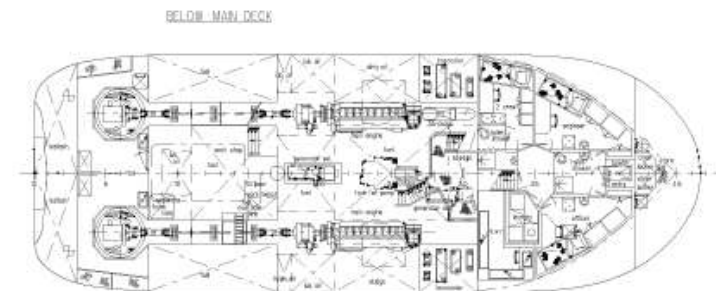
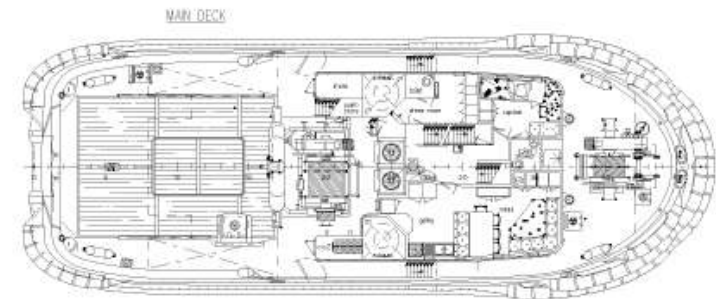
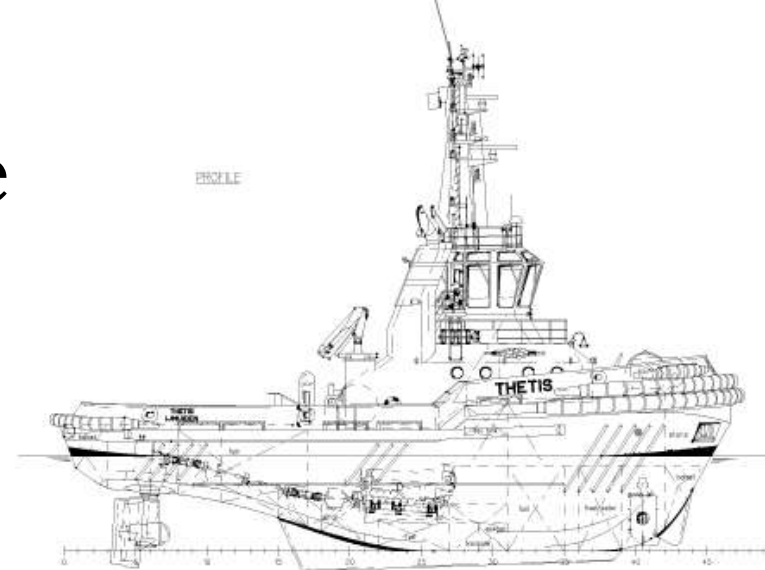
Beschrijving geometrie

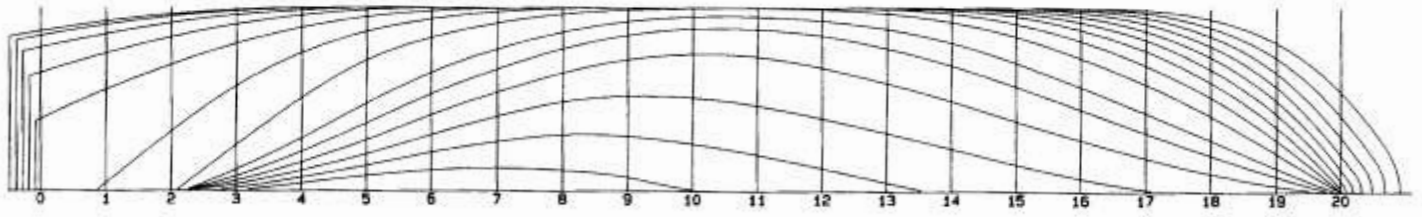
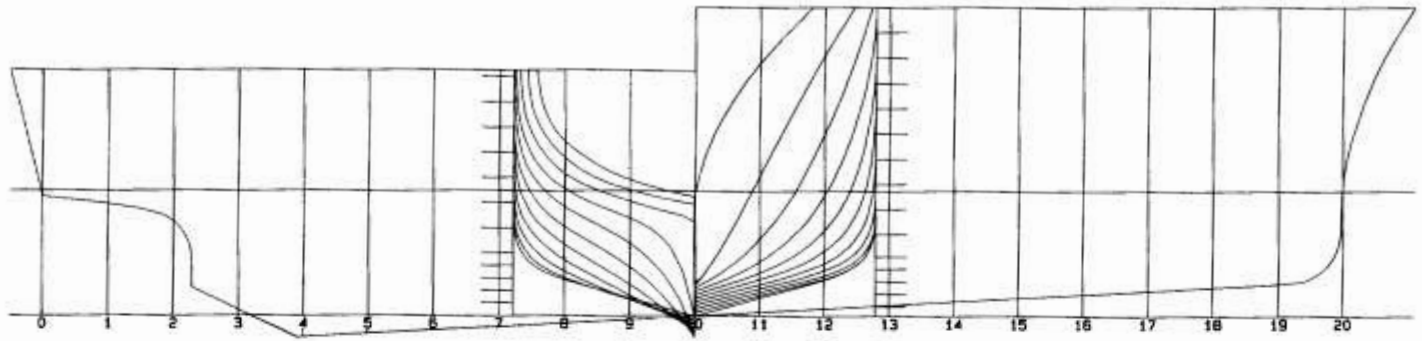
Voorbeelden



Beschrijving geometrie

Voorbeelden





Beschrijving geometrie

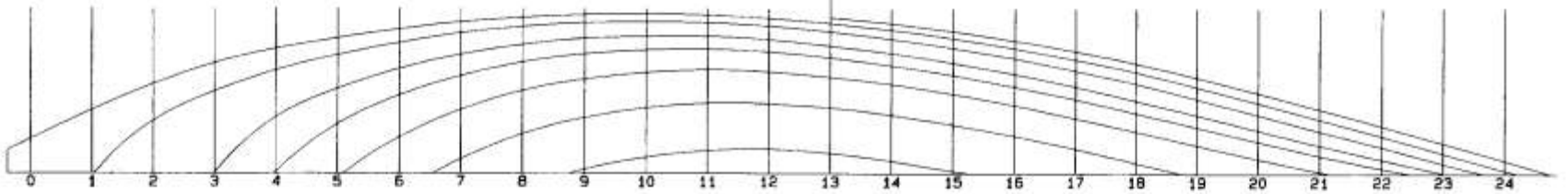
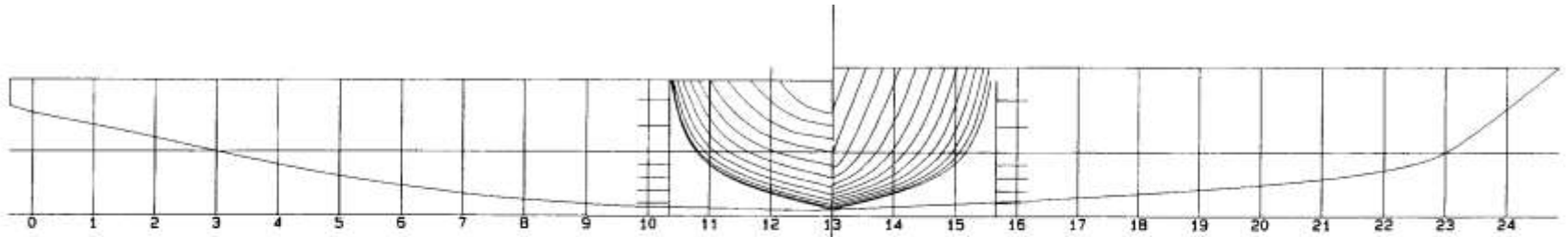
Voorbeelden



Beschrijving geometrie

Voorbeelden





Beschrijving geometrie

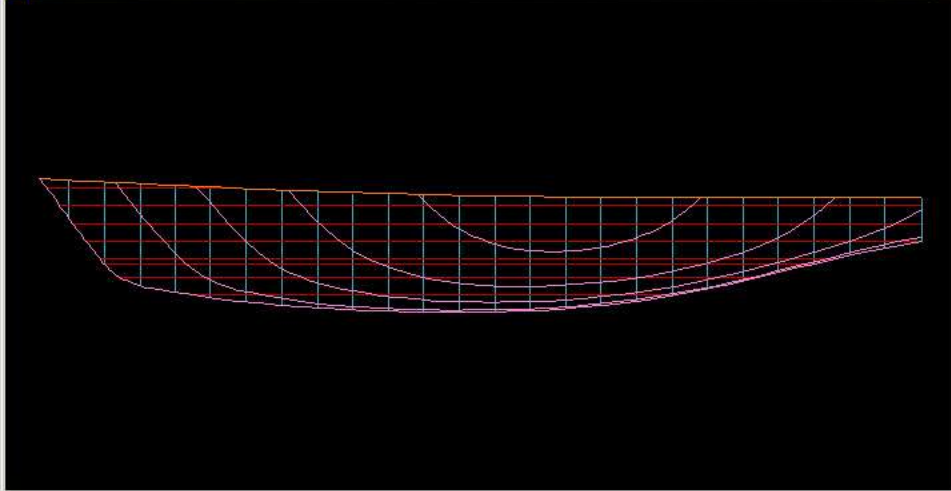
Voorbeelden



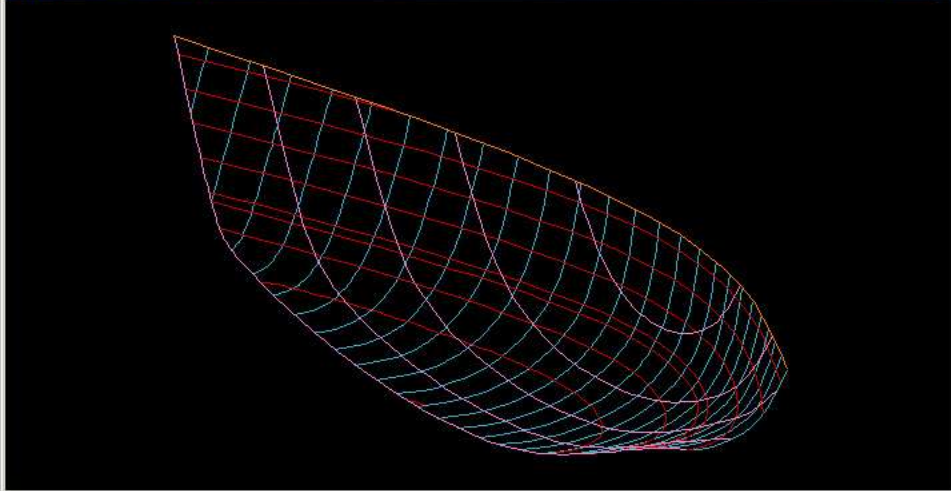
Lijnenplan in de praktijk

Computerprogramma's

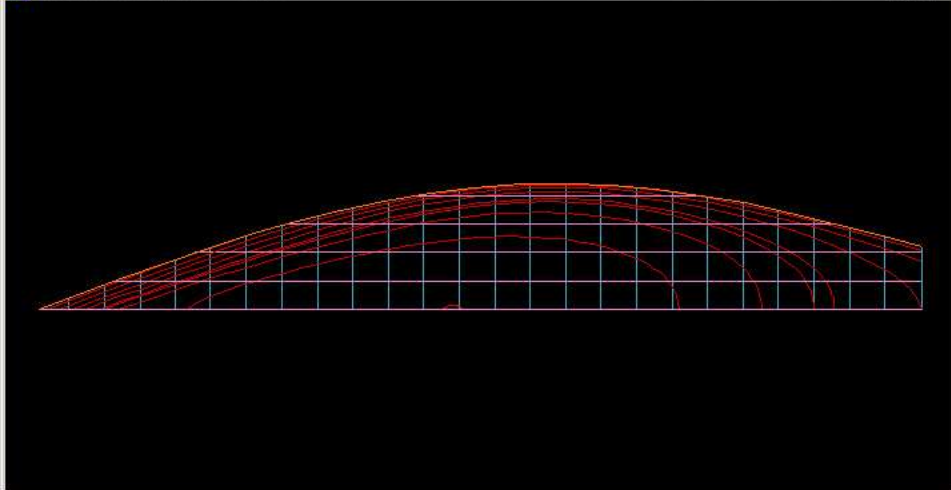
Sideview. Angle CL/base = -90/0



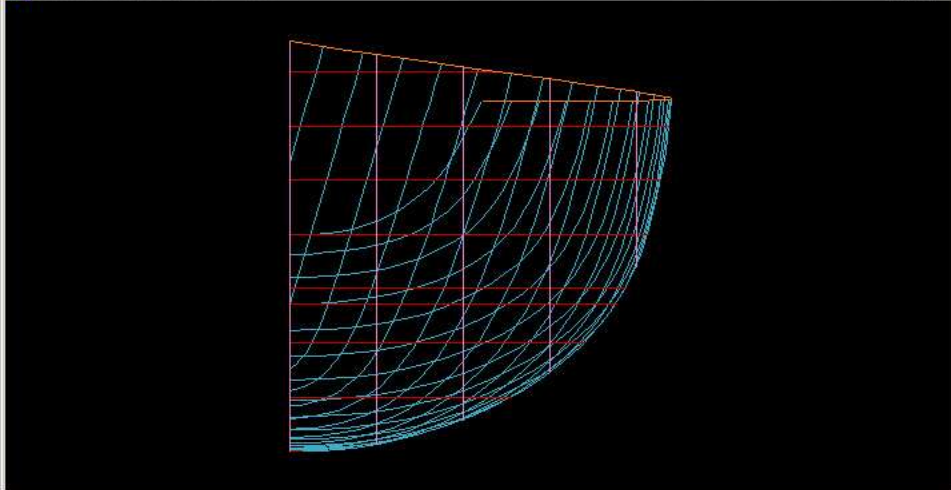
Angle CL/base = -20/13



Topview. Angle CL/base = -90/90



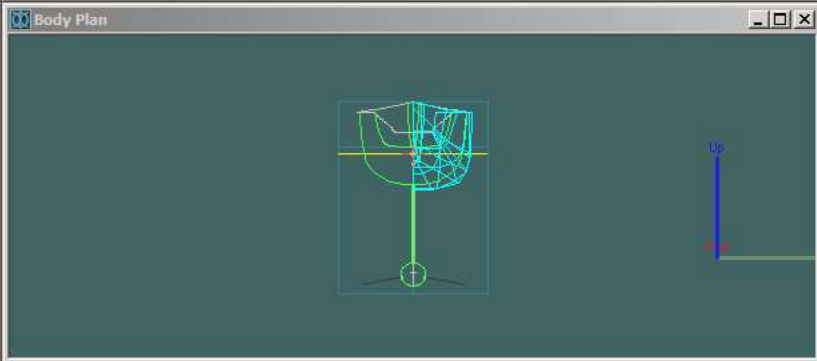
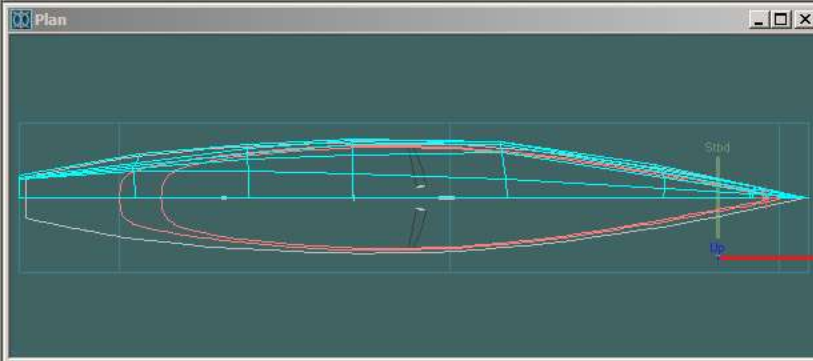
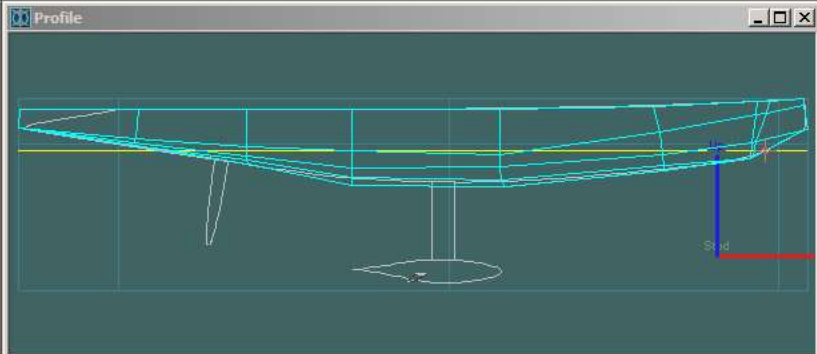
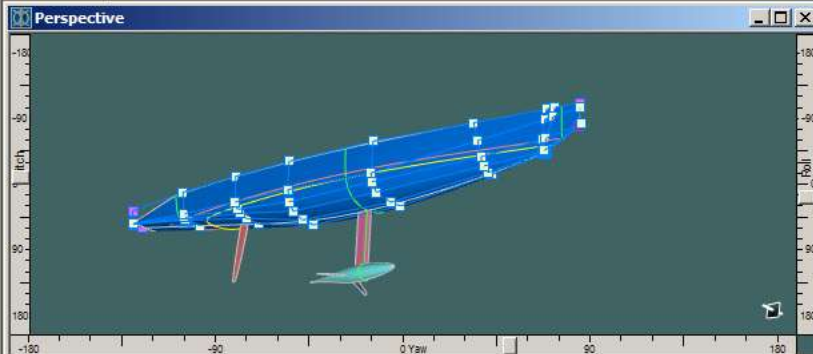
Frontview. Angle CL/base = 0/0





Assembly

- Design
 - Main hull
 - Appendages



Properties

Curves

Name	Assembly	Stiffness	Proj. Dirn.	Used for Trim.	Visible	Locked	Symmetrical	Colour

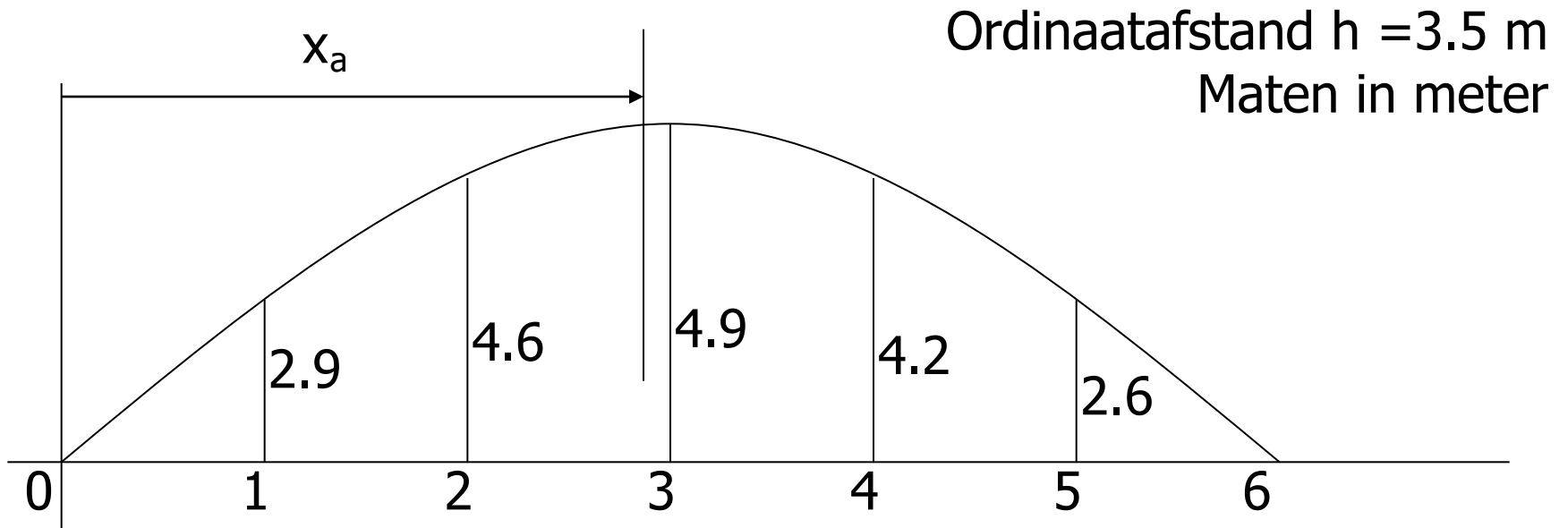
Long. Stiff.	Trans. Stiff.	Visibility	Locking	Symmetry
9	6	6	<input checked="" type="checkbox"/>	<input type="checkbox"/>
4	4	4	<input checked="" type="checkbox"/>	<input checked="" type="checkbox"/>
5	4	4	<input checked="" type="checkbox"/>	<input checked="" type="checkbox"/>
4	4	4	<input checked="" type="checkbox"/>	<input checked="" type="checkbox"/>

Hoofdstuk 4 Numerieke integratie

Mt501 Hydromechanica 1

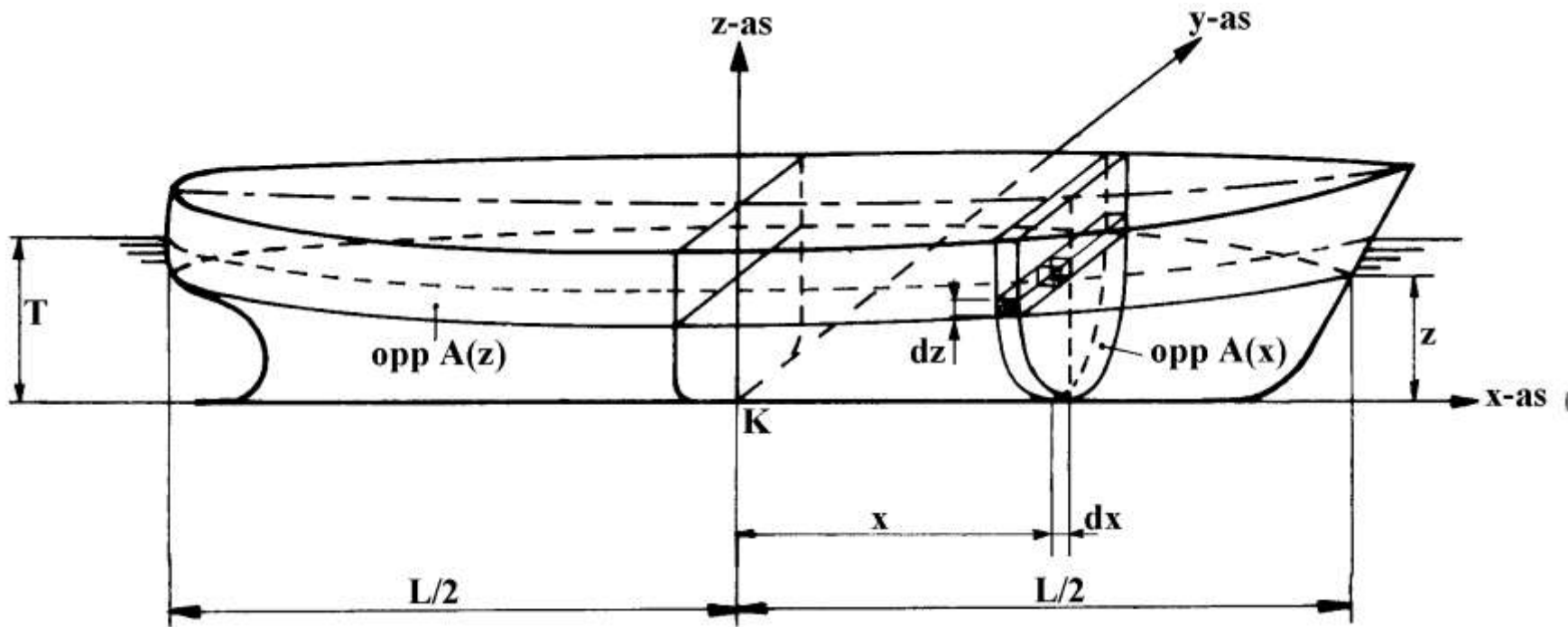
Numerieke integratie

Voorbeeld Simpsonregel



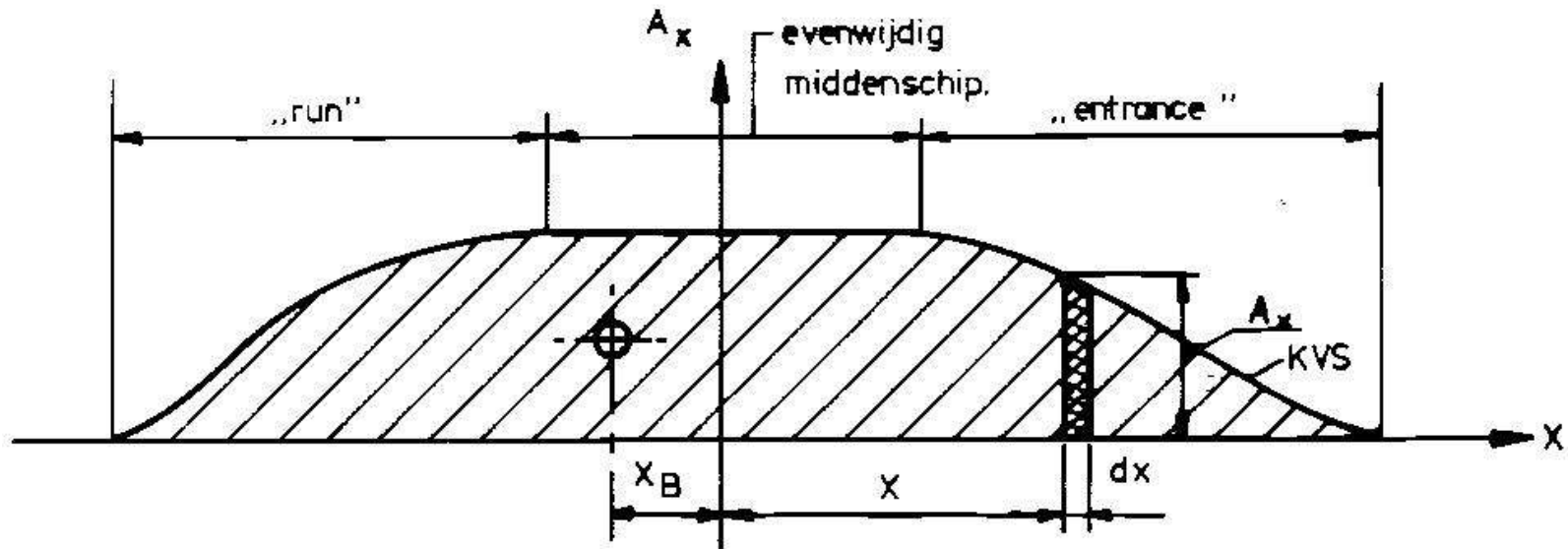
Numerieke integratie

Volume



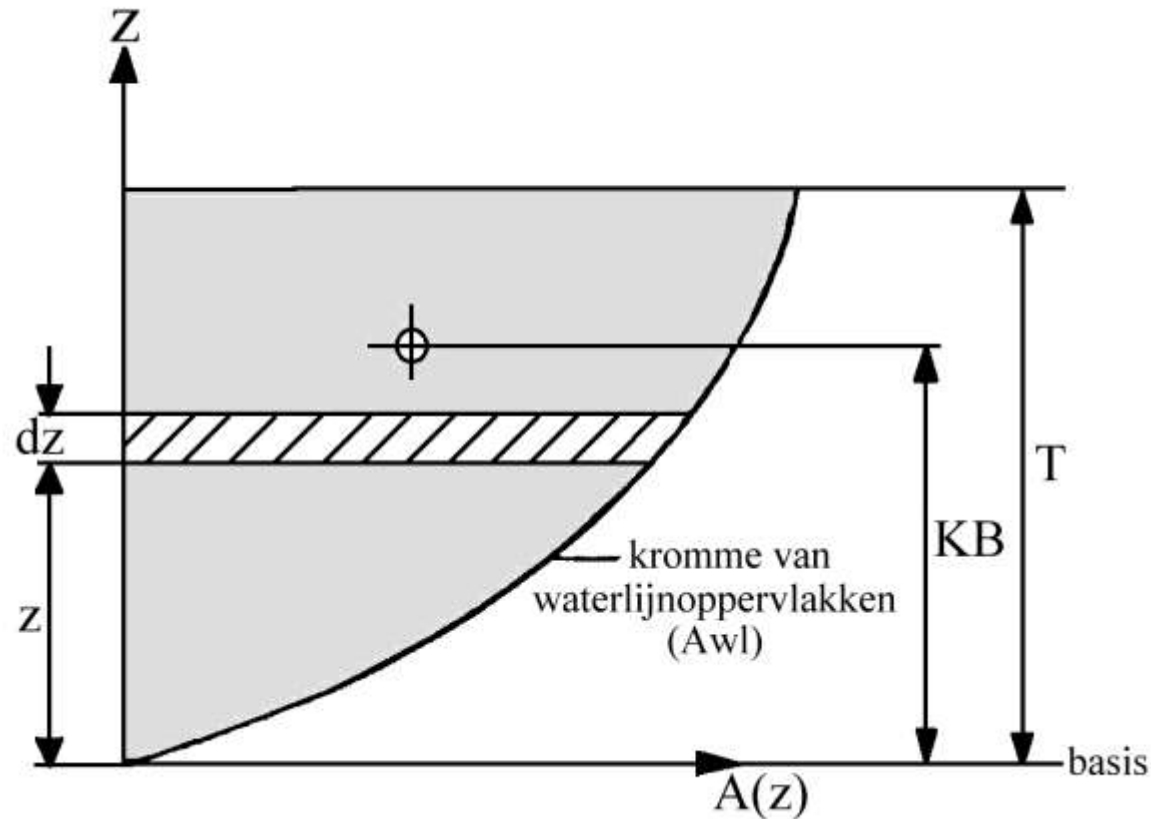
Numerieke integratie

KVS – Kromme van spantoppervlakken



Numerieke integratie

Kromme van waterlijnoppervlakken



Huiswerk

- Lezen hoofdstuk 3 en 4
- Vraagstukken 1, 5, 6