


# AE4536: Buckling of structures

## What is buckling

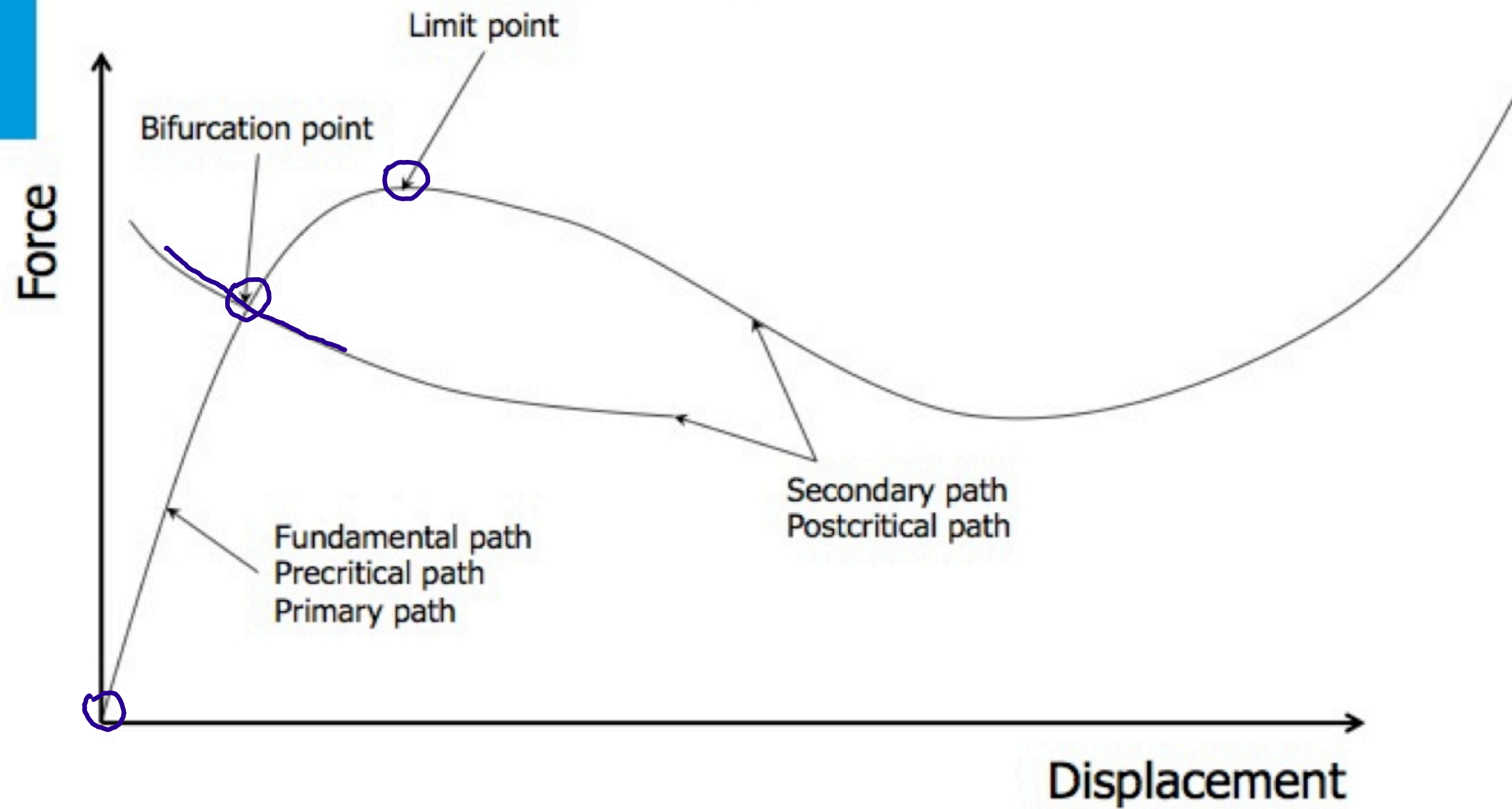
Roeland De Breuker  
29/08/13



# What is buckling ?

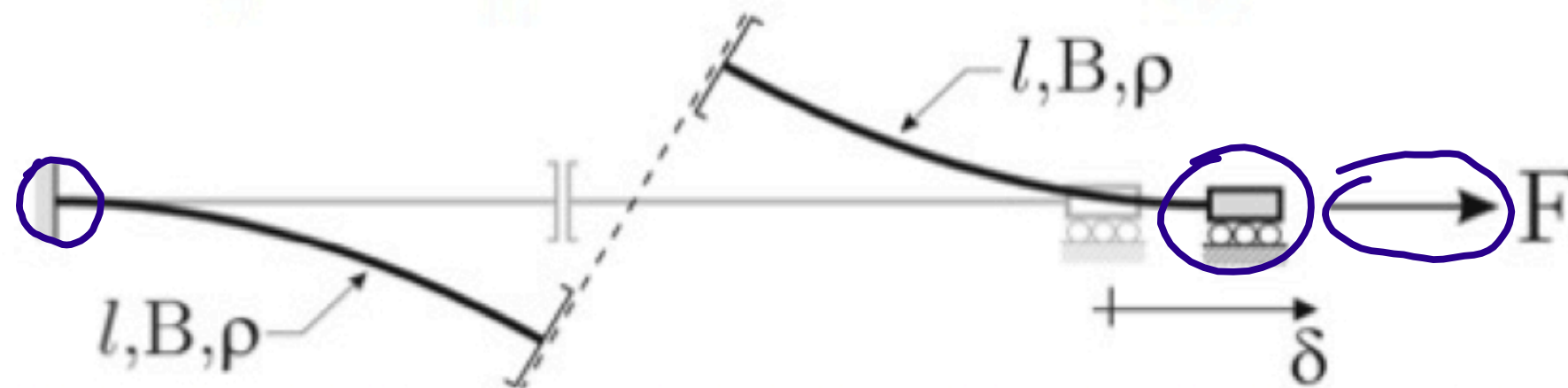
Buckling is a critical state of a structure at particular load levels at which the structure exhibits large displacements or collapse

# Types of buckling



# Misconceptions

- Buckling is always associated with compressive forces



Zaccaria, D., Bigoni, D., Noselli, G. and Misseroni, D., *Structures buckling under tensile dead load*, Proceedings of the Royal Society A, 2011, 467, 1686-1700

- Buckling always leads to failure

