

Windows XP SP 3

How to upload your webpage to your www Internet_folder

For use by: Employees and Students
Version: 0.1
Date: 26-08-2009
Owner: SSC ICT

How to upload your webpage to your Internet folder

Before you begin

The following instruction is supported by the TU Delft and has been tested to be working.

Prerequisites

In order to successfully create a drive mapping to your internet folder on your homedrive, make sure your computer has a **working internet connection** and that you have all the **latest updates for Windows XP installed** (including Service Pack 3).

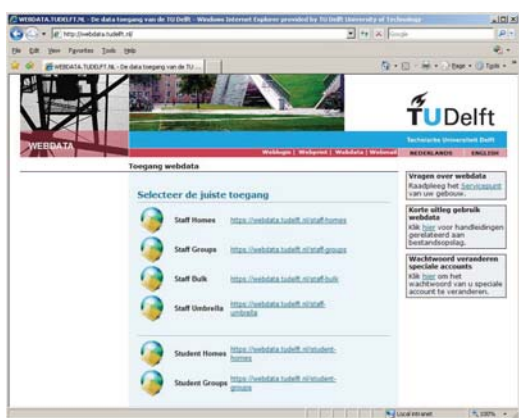
You also need an working **Netid account** to log on to your homedrive.

In case you don't have a **www** folder on your homedrive, please send an e-mail to your Servicepoint to **request for an personal 'www folder'**.

Make sure to include your name and Netid in the e-mail.

How to create a drive mapping using webdata

Follow the procedure below to connect to any network location available on webdata.tudelft.nl. As an example this manual describes how to connect to your Personal Folder.



Step 1

Open Internet Explorer and go to:

"<http://webdata.tudelft.nl>".

On this page you can find the links to the network locations that are available through webdata.

In this example we want to navigate to a Personal Folder, so we click on the link:

For employees:

"<https://webdata.tudelft.nl/staff-homes>".

For students:

"<https://webdata.tudelft.nl/student-homes>".

Step 2

Log in with your NetID credentials:

In the username field, type: 'dastud\NETID' -where you replace (NETID) with your own NetID username.

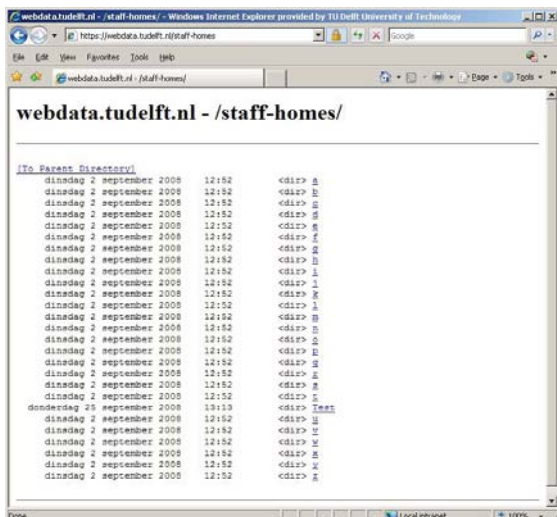
For example, if your NetID username would be 'abotersloot', type: "dastud\abotersloot".

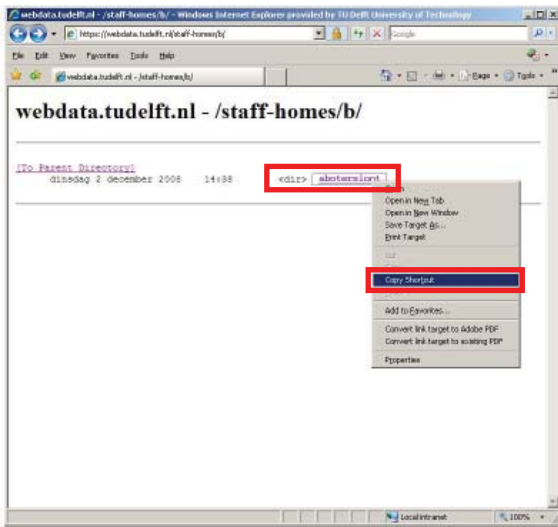
Fill in your NetID password in the password field.

Step 3

A list of directories is shown. Click on the directory which name corresponds to the first letter of your surname.

For our example 'abotersloot' we click on 'b'.

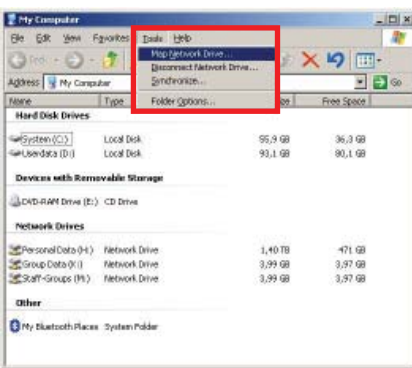




Step 4

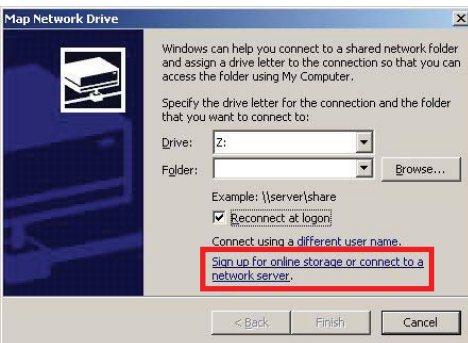
You'll get into the main directory of your Personal Folder, with your NetID's username shown as a link.

Right-click on this link and select: "Copy Shortcut".



Step 5

Open 'My Computer'. In the menubar, under 'Tools' click on 'Map network drive'.



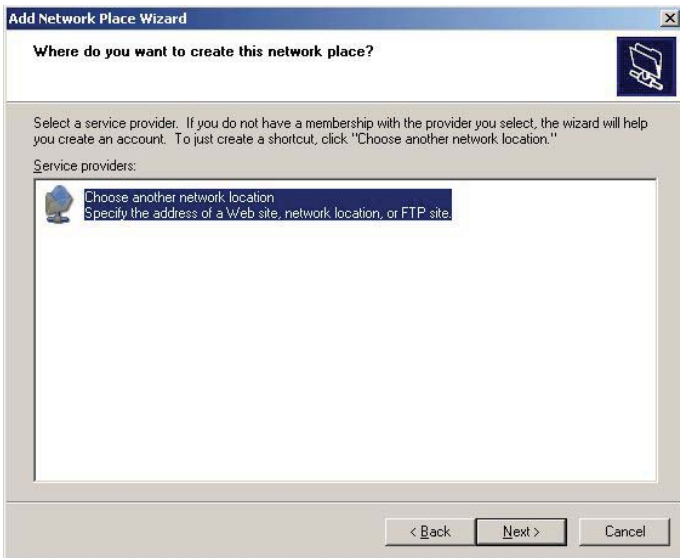
Step 6

In the window that opens, click on the blue link: "Sign up for online storage or connect to a network server."

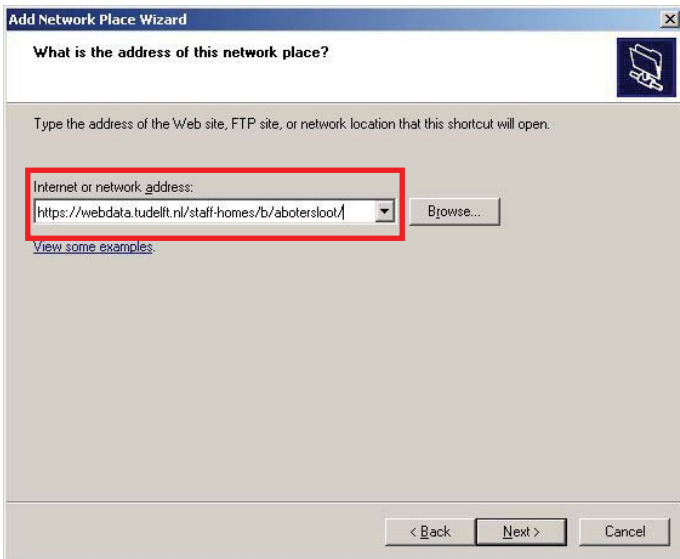


Step 7

Click 'Next'



Step 8
Click 'Next'.



Step 9
In the next window, paste (ctrl+v) the URL you copied in step 4 in the field for "Internet or network address" and click 'Next'.

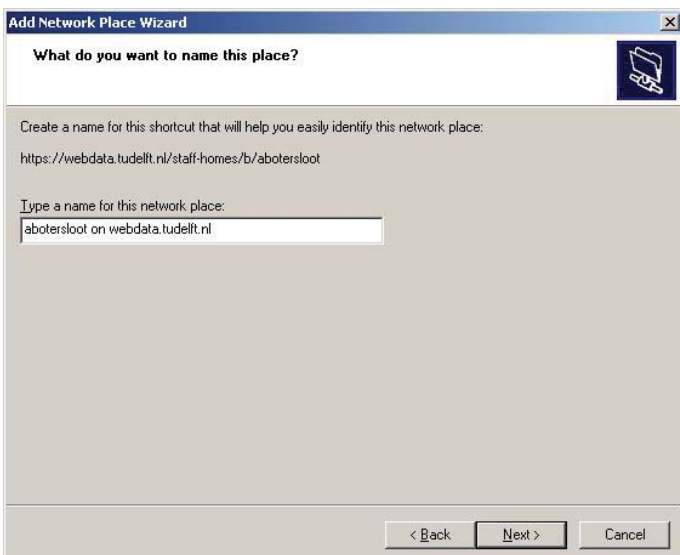
*In case of our example 'abotersloot' we would see the following link appear in the field:
"https://webdata.tudelft.nl/staff-homes/b/abotersloot"*



Step 10
Log in with your NetID credentials:

In the username field, type: 'dastud\((NETID)'. -where you replace (NETID) with your own NetID username.

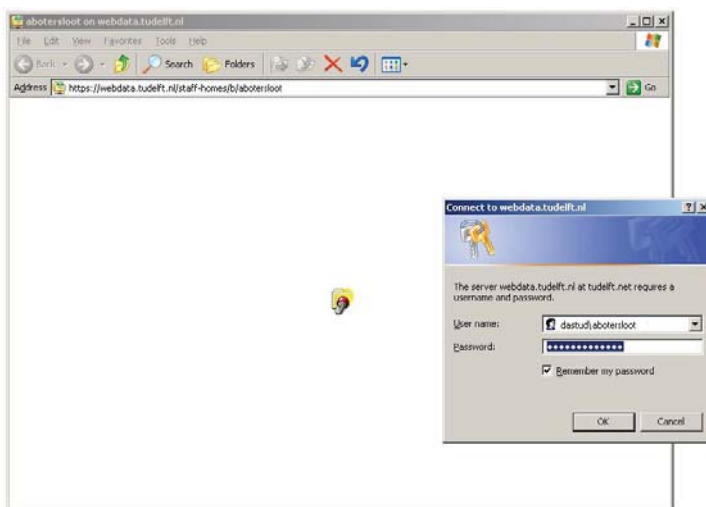
Fill in your NetID password in the password field.



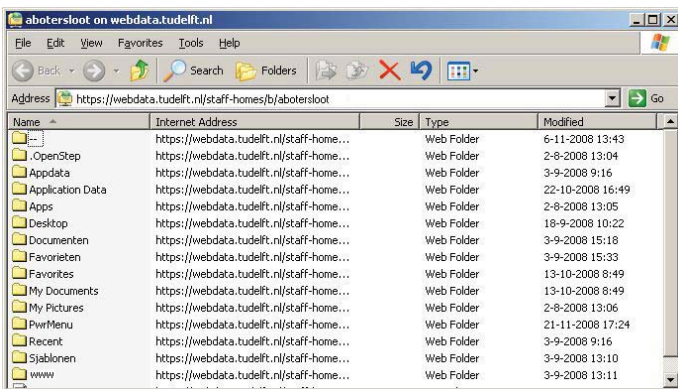
Step 11
Choose a name for the shortcut and click 'Next'.



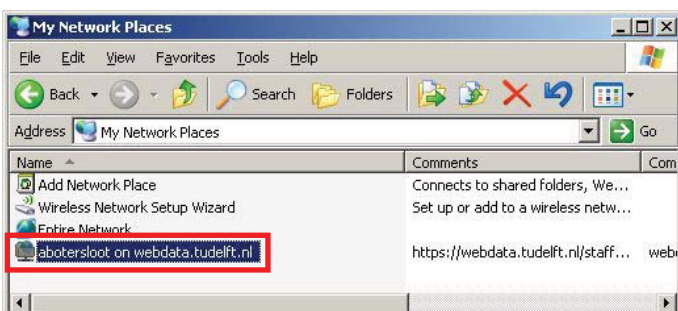
Step 12
Click 'Finish'.



Step 13
When the new window opens, you might be presented with another log on window. Just log in with your NetID credentials as in step 10.

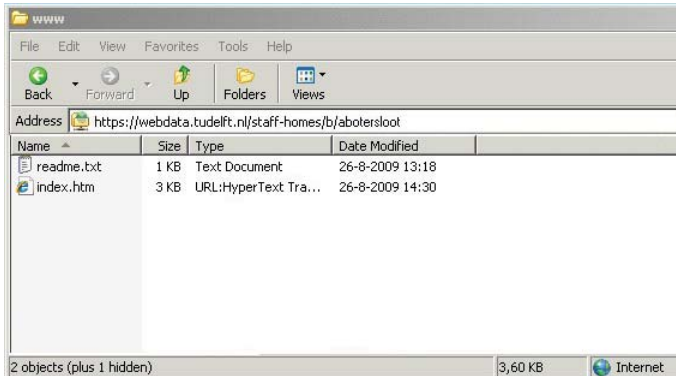


Step 14
The new window will open showing the contents of your Personal folder. You can now access the internet folder and files just like any other file or folder in Windows.
The name of the internet folder is: www



Step 15
Next time you want to access your internet folder, go to 'My Network Places'. Double click on the shortcut and log on with your NetID if necessary.

TIP
To make a copy of this shortcut on your desktop, just drag-and-drop it to your desktop from this window.



Step 16

In the www folder there is a readme.txt present. The file contains information about your website ID. Each individual homepage has a unique ID of 5 characters. This ID is used in your homepage address (URL).

For example:

This URL you can type in your address bar of your web browser.

<http://homepage.tudelft.nl/k22z2/>

If there is an index.htm present in your www folder, the content of this file will be displayed in your web browser.

It is strongly recommended to copy and paste files to and from your internet folder. Dragging files may cause problems and loss of data.

Existing webpages

If you already have a BK student webpage with an URL like:
<https://bkmig.bk.tudelft.nl/students/<student number>/Internet>
then copy the files you want to keep to the new www folder.
The old web pages will disappear 15/10/2009